

NEWS

Powerview's Most Wanted



PAGE 2

COMMUNITY

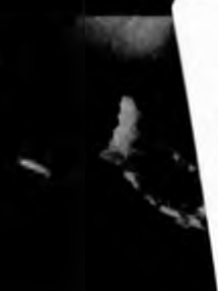
Lake Friendly Label Campaign Launched



PAGE 9

NATURE:

The Humming Bird



PA

Serials Clerk Corp  
Legislative Library of Manitoba  
Room 100 - 200 Vaughan Street  
Winnipeg, MB R3C 1T5

\$1.00 tax included  
May 27, 2009  
Volume 9, No. 50

The Winnipeg River

# Echo

Pine Falls/Powerview, Sagloong, St. Georges, Great Falls, Beaches, Little Black River, Manigotagan and Bissett

## Cottage Taxes to Increase

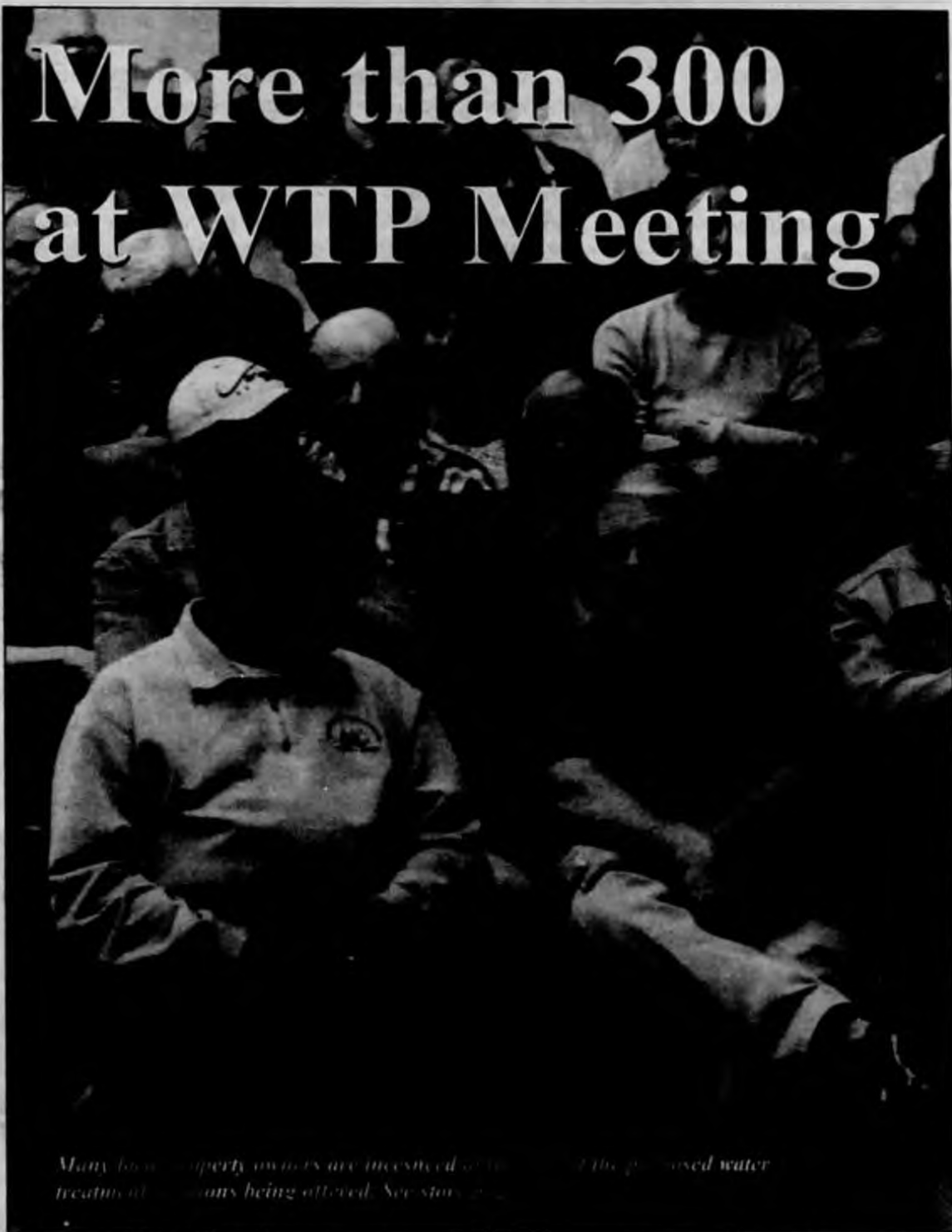
By Charles Norman

The RM Council heard a presentation from the Assessment Branch of the Department of Intergovernmental Affairs at yesterday's council meeting. The net effect is that taxes on cottage property will increase

Municipal tax assessments are conducted every five years and are based on market values. In the last five years property values in the RM have increased by 63%, but not all types of property have increased at the same rate. Commercial property, for ex-

ample, has increased in value by only 31%. Residential property has increased by 60%. Thus if RM expenses remained the same taxes on commercial property would be reduced and taxes on residential property would be increased, but cottage property, which is included in the above numbers for residential property, has increased by substantially more than normal residential property, thus there is no way that cottage owners will avoid increases. Homeowners will also see an increase but it will not be as large as cottage tax increases.

## More than 300 at WTP Meeting



Many home property owners are concerned about the proposed water treatment options being offered. See story on page 2.

## Black River Annual Bike-a-Thon Scheduled for Early June

The Black river Bike-a-thon, from Buffalo point, to Black River, a distance of 450 km, is in its seventh year. Youngsters from the ages of eight to seventeen, take three days to cover the distance. It takes them roughly 22 hours in total

The money being raised from the bike-a-thons will be used to build a recreation centre costing about \$250,000. The purpose of the ride is to

collect sponsors who will contribute to the fundraising. Companies sponsoring the cyclists will be acknowledged on a "Wall of Fame" to be included as part of the building. Sponsors will also be recognized in radio and newspaper article about the ride, and on tee shirts, hats and other items.

More information can be obtained from Allister Courchene at 367-4411, or 367-2885.

SUNOVA

bank brighter.  
www.sunovacu.ca

welcome to the bright side.



# Powerview RCMP Press Report

## NEWS REPORT May 11th to May 24th, 2009

2009/05/11

**FORT ALEXANDER** - Police received a complaint of an assault. A male sustained injury to the facial area. A suspect has not been identified at this time.

**BLACK RIVER** - a male has been charged in connection with a spousal assault of a female. The man was taken into custody and transported to Provincial Remand Center.

**SEYMOURVILLE** - culprits sunk a commercial fishing boat off the town dock at some point overnight. No Damage was sustained to the vessel in the incident.

2009/05/12

**POWERVERVIEW** - investi-

gations continue into a spousal assault.

**PINE FALLS** - intervention to keep the peace involving a custody issue resulted in no further problems. The estranged couple were advised to seek legal counsel in the interim.

2009/05/13

**FORT ALEXANDER** - a male and female were both spoken to by police due to a verbal arguments which had been escalating. The situation was soon stabilized. A male had also left the residence. No further calls were received by police in relation to the incident.

- a female was lodged in cells in the early morning

hours. The highly intoxicated woman was apprehended for mischief after she was observed throwing debris at a residence. Combative with herself and police she remained under constant watch for her own safety and not released until sober much later in the day.

**SEYMOURVILLE** - investigation continues into an act of mischief. A verbal dispute between 2 people resulted in a residential window being damaged.

**HOLLOW WATER** - 2 incidents of threats being uttered by youth were reported to police to be documented at this time. School authorities dealt with the

issues but wanted police aware in the event anything further developed.

**MANIGOTAGAN** - 2 break, enter and thefts at cottage properties were reported to police. A canon camera set and tools were stolen which included a Dewalt sawsaw, A McCullough Chainsaw, A

2009/05/15

**HOLLOW WATER** - a male was located and charged for a spousal assault which occurred in the early morning hours. Alcohol was involved in the incident.

**FORT ALEXANDER** - investigation continues into an abandoned vehicle left in a ditch. An owner of the vehicle could not be located.

2009/05/16

**HILLSIDE BEACH** - a break and enter of a cottage was reported to police. The owner was notified. It was not known at this time what was stolen if anything.

**RM ALEXANDER** - a male has been charged with possession for the purpose of trafficking after a search warrant was issued and a substantial quantity of marijuana was seized. Police recovered approximately 252 grams in the incident.

**POWERVERVIEW** - a female has been charged after taking a vehicle without the owners consent. The vehicle was later recovered damaged. Investigations continue.

2009/05/17

**MANIGOTAGAN** - a male was apprehended and charged accordingly after failing to comply with a probation order. The man was released and issued a promise to appear in Powerview Court at a later date.

**RM VICTORIA BEACH** - a 2006 Honda CRF motorcycle was stolen from a residence. Investigation continues.

2009/05/18

**HILLSIDE BEACH** - a report of a break, enter and mischief was made to police. The incident occurred sometime over the winter months.

**FORT ALEXANDER** - Police attended a complaint

of a break, enter and mischief at a residence. Culprits entered the home and proceeded to vandalize it. No suspects were identified at this time.

2009/05/19

**BERESFORD LAKE** - numerous items were stolen as the result of a break and enter to a cottage. The list included A 50 HP Honda Motor, a 9.9 mercury, several taxidermy items, fishing gear etc... The incident occurred sometime over the winter months.

**PINE FALLS** - An intoxicated male was apprehended and charged for trespassing after creating a disturbance at a local business. The man was held in cells until sober and released with a promise to appear in Powerview Court at a later date.

**FORT ALEXANDER** - Police continue to investigate an assault of a female youth. - a 1999 Black GMC GLT Suburban was stolen from a residence.

2009/05/20

**BLACK RIVER** - a female was apprehended and charged accordingly for assaulting a male at a house party. The woman was lodged until sober then released in the morning on conditions with a promise to appear in Powerview court at a later date. The man did not seek medical attention at the time. Alcohol was involved in the incident.

**RM ALEXANDER** - an intoxicated male was taken into custody after attempting to gain access to a vehicle. The man breached several court conditions and was transported to Provincial Remand Center later in the day.

**PINE FALLS** - a complaint of shoplifting is still being investigated by police. Culprits were caught on camera.

2009/05/21

**RM ALEXANDER** - police patrolled Highway 11 after several complaints of 2 possible impaired drivers. Vehicles matching the descriptions provided were not located. And no further

# News

complaints were received.

**FORT ALEXANDER** - further investigation of a complaint of assault resulted in a consensual fight between 2 females. The situation had stabilized and the matter referred to the Peace Bond process.

2009/05/22

- Investigations continue into 2 separate unrelated incidents of sexual assaults.

**POWERVERVIEW** - An intoxicated male was lodged in cells after an assault on another male. The victim was taken to local hospital for a facial laceration and later released. Investigations continue.

**FORT ALEXANDER** - a female was remanded into custody and transported to Provincial Remand Center. The woman who was intoxicated, had been causing a disturbance at a residence and in breach of 2 court orders.

- police assisted Child and Family Services. Members were present where a child custody issue was being jeopardized. No further problems were incurred. - Threats to a female issued via email were referred to Winnipeg Police Service for further investigation. The source & suspect was residing in the city of Winnipeg.

2009/05/23

- A sexual assault remains under investigation.

**FORT ALEXANDER** - police attended a location to a complaint of assault but upon arrival found the suspects had fled the scene. A search of the area was made but the males matching the description were not located.

Police received no further call backs involving the incident.

2009/05/24

**LONG LAKE** - a 2007 Polans ATV was stolen from a cottage property. Police have no suspects in the incident.

**HOLLOW WATER** - investigation continues into a complaint of threats being uttered.

**FORT ALEXANDER** - Police continue to investigate an incident where a young adult female was found injured lying on the on the shoulder of highway 11. She was taken to local hospital and treated for her injuries.

**SUMMARY:**

- Police also attended to: 7
- False 911 calls
- 5 Alarms
- 12 Assistance to other Police Agencies/Service of Documents
- 10 Common Offence Notices (HTA/Liquor)
- 2 Coroners Act
- 0 Impaired Driving/ Refusal of Breathalyzer
- 6 Intoxicated Persons Detention Act/Disturb Peace
- 6 Mental Health Act Transport
- 3 Noise By Laws/ Complaints
- 5 Theft Under(Prescription Medication)
- 11 Traffic Accident Reports
- REMEMBER IF YOU HAVE ANY INFORMATION ON ANY CRIMINAL MATTER YOU CAN REMAIN ANONYMOUS AND CONTACT CRIME STOPPERS AT 1-800-782-8477 OR THE POWERVERVIEW RCMP AT 367-8728.



**Semi Ditched**

A semi went partially into a ditch last week. Equipment from the mill had to be used to get it out. The tires of the semi were raised off the ground, and the back half was in the ditch.

## Powerview's Most Wanted



Kelly Brandon HENDERSON  
(DOB 1978/03/24)

Warrants - Powerview Detachment

Assault x 3, Fail to Comply Probation Order, Breach of Recognizance x 8



Joshua Leighton BRUYERE  
(DOB 1986/02/17)

Warrant - Powerview Detachment

Impaired Driving, Fail to Attend Court

Thursday

Bud, Spud & Rib Night  
**\$8.99**

Friday

Bud, Spud & Steak Night  
**\$8.99**

Saturday

Bud, Spud & Steak Night  
**\$8.99**



HAPPY HOUR  
Every Weekend  
4:30-8:00pm

NITE

Papertown

Women's PAP Clinic  
June 2, 2009  
Pine Falls Health Complex  
Call 367-5401 to book an appointment with a Nurse Practitioner.

Life's Great Outdoors  
in Manitoba's Provincial Parks  
And Now Park Entry is  
**Free!**

Manitoba's provincial parks are open for the season. Plan a visit and discover pristine wilderness, fresh air, wildlife, sparkling water and this year, you'll also discover something new -

### NO ENTRANCE FEES.

#### Free Entry

Today, many Manitobans are looking for recreation opportunities closer to home so for the next two years, there will be no entrance fees at any of Manitoba's provincial parks. Entry is absolutely free so bring your family and friends and explore more of our magnificent province.

#### Better than Ever

Recent improvements to Manitoba's provincial parks make them an even better destination choice. We've added more yurts as well as new campsites and facilities to help make your stay as enjoyable and memorable as possible.

Camping can be an affordable family getaway and you can reserve your favourite spot from the comfort of your own home. Visit [manitoba.ca](http://manitoba.ca) or call 943-3333 (in Winnipeg) or 1-888-4U2-CAMP (toll free) today.



Manitoba

# Comment



## More on the World Heritage Site

By Charles Norman

An interesting article appeared on the Web a few days ago. It appears that deforestation is taking place in tropical Africa at an accelerating rate, because no one owns the forest. Anyone who wants to can cut down a tree.

It will be the same on the east side of the lake. If the provincial government has given up control of crown land in the region then there will be no one to say yes or no to anyone who wants to cut down a tree. If someone up there puts together a logging operation to ship logs to Pine Falls, Kenora, or even the United States there would be no one to stop him.

The province could, of course, decide to use its clout to prevent this happening in a Boreal Forest World Heritage Site, but that would mean that they had taken control back from the local First Nations.

### Include Pine Falls in discussions

Taking a huge area of the province and turning it into a world heritage site affects the future of Pine Falls and surrounding communities that make a living from the forest.

It would seem a common courtesy to include representation from these stakeholders in any discussions as to the nature of the site.

It would surely be better to include them now, rather than have them go to the United Nations to protest the fact that the future of their community is being stolen from them.

To date no one has approached the federal government with a view to developing a World Heritage Site. The provincial government cannot deal with the United Nations, nor can a First Nation. Not even Don Sullivan in his role as special assistant to the Minister of Conservation can deal with the United Nations. It has to be the federal government. It is indicative of the fact that Sullivan's real strategy is to prevent anything at all happening in his bailiwick. If he were serious discussions would already have begun with the responsible federal government department.

### A right to subsistence living?

Don Sullivan has said that aboriginal people have a right to subsistence living, that is, living of the land with

only the products of their own labour. This is an attractive idea to the greens. They like the idea of going back to a better way of life living closer to nature.

They like the idea of it so much that they promote it for other people, Don Sullivan lives in Winnipeg, and goes to work for his minister in the Legislative Building, so, of course he cannot live the simple life that he wants the people on the east side of the lake to enjoy.

Subsistence living is what used to be enjoyed by all of us, and most recently by Canada's Aboriginal peoples. One of them was a friend of Canadian artist Emily Carr in the latter part of the nineteenth century when Emily Carr was painting west coast totems. Carr's friend was a Haida woman who had twenty children. Not one of them lived to its first birthday. There is a dark side to subsistence living.

What the people of St Theresa's Point and other communities in the area is jobs. Every one of them would gladly give up subsistence living in exchange for Sullivan's job in the Legislative Building



## MP Report

Niki Ashton, MP Churchill

## CBC Victory Shows You Can Make a Difference

You can make a difference. That is the clear message from our successful campaign to save CBC North Country.

When CBC announced the closure of CBC North Country in Northern Manitoba and CBC Keewatin Country in Northern Saskatchewan we did not waste any time in fighting back.

We immediately organized a save our CBC committee and a protest of ex-Northerners at the CBC office in Winnipeg. We drafted a petition and letters calling for the reinstatement of our stations. I raised the issue with the Minister of Heritage in Question Period in the House of Commons as well as at the Commons Heritage Committee, where I am an Associate member. I met with the CBC President. Here in the North we organized an event to support our CBC North Country.

We sent a clear message that we wanted our unique Northern link kept in place.

One of the keys was pointing out that North Country and Keewatin Country were stations not bureaus. This was important because the CBC had said it was not going to close any regional stations. Our research pointed out that they were listed as stations by the CRTC, which regulates the CBC and by the CBC on its own website. If it looks like a station and sounds like a station it is a station.

Most importantly we pointed out how much support there was from

Northerners for our campaign. We heard from many loyal listeners. We heard from Mayors, Chiefs, Councillors and other Northern leaders. Even people who didn't necessarily listen to CBC on a regular basis supported our fight for fairness for the North.

I would like to thank CBC President Hubert Lacroix for listening to us. Despite the difficult times they are facing, the CBC came through. We need to work to ensure CBC has the funding to support the vital service it provides.

I also want to pay tribute to CBC North Country host Mark Szyszlo. He does a tremendous job day in and day out with limited resources. He has a lot to do with the degree to which CBC North Country connects us in the North.

If there was any lesson out of what happened, it was the need to continue to stay active. That is why I will be working with our committee to form a Friends of CBC North Country committee.

As MP for Churchill I will be continuing to work hard to make a difference. I will continue to fight for fairness for Northern Manitoba.



# News



## On Parliament Hill

Your Voice in Ottawa, Vic Toews, MP for Provencher and President of the Treasury Board



University of Winnipeg

## Investing in Manitoba's Post-Secondary Education

As part of Canada's Economic Action Plan, our Government introduced the Knowledge Infrastructure Program, a two-year \$2-billion economic stimulus measure to support infrastructure enhancement at Canadian post-secondary institutions, including universities, community colleges, and institutes of technology.

Last week, I was very pleased to join the Honourable Gary Goodyear, Canada's Minister of State (Science and Technology), for the announcement of 10 projects at post-secondary institutions throughout Manitoba, including:

- Assiniboine Community College, Dauphin
- Red River College, Winnipeg
- Brandon University, Brandon
- University of Manitoba, Winnipeg
- Collège Universitaire de Saint-Boniface, Winnipeg
- University of Winnipeg, Winnipeg
- Canadian Mennonite University, Winnipeg

Funding is being provided for deferred maintenance, and repair and expansion

projects. This responds directly to the need indicated by post-secondary institutions to improve existing campus infrastructure across the country.

Investments made through the program will not only generate economic benefits and support job creation, for engineers, architects, trades people and technicians, this will also enhance research capacity, support the attraction of new students and ensure students have a better educational experience.

The program will also have an important positive net impact on the environment by reducing energy use, reducing greenhouse gas emissions, and improving waste management at universities and colleges across Canada.

We are taking action to provide short-term economic stimulus in local communities throughout our province. This will lead to more jobs while at the same time strengthening Canada's long-term capacity for research and innovation.

The renewal of college and university facilities will encourage more world-class researchers to work in Manitoba and give them the

tools they need to make more discoveries that will benefit people around the world.

Our Economic Action Plan stimulates the Canadian economy over the next two years and improves our long-term competitiveness through \$12 billion in new infrastructure investment, including the \$2 billion Knowledge Infrastructure Program. This new support is the next substantive investment in our Government's multi-year Science and Technology Strategy. Mobilizing Science and Technology to Canada's Advantage.

For more information about the Knowledge Infrastructure Program, including a list of the approved projects to date, please visit [www.ic.gc.ca/knowledge-infrastructure](http://www.ic.gc.ca/knowledge-infrastructure).

Please feel free to contact my office if you have any concerns or issues you would like to discuss. You may contact me toll free at 1-866-333-1933 or at 204-326-9889 or in Lac du Bonnet at 204-345-9762. You may write me at 8-227 Main Street, Steinbach, MB R5G 1Y7, by fax at 204-346-9874 or by email at [toewsv1@mtns.net](mailto:toewsv1@mtns.net).

## Report From the Legislature

By Gerald Hawranik, MLA for Lac du Bonnet, House Leader and the Critic for Advanced Education

## Photo Radar - Safety or Money Grab?

When legislation was introduced by the Provincial Government in 2001 to allow government to install red light cameras and photo radar cameras on our streets and roads, almost all Manitobans supported this initiative because they thought that it would enhance safety on our roads. It was also touted as a way to free up the police so that they could devote more of their time to catch criminals, rather than spending all of their time on our roads and highways. Photo radar was welcomed by the police and by the public in general. Initially, photo radar did just that, but after the Provincial Government came to realize that it could raise revenue for the government, the initial purpose for photo radar took a back seat to deploying it to raise more money for a cash starved Provincial Government. It became very obvious what the Province had in mind when in 2007, there were only 3,000 photo radar tickets issued, and then in 2008, the number of photo radar tickets skyrocketed to 60,000 tickets. The dramatic increase in these tickets came when the NDP started to target road construction areas. There is no denying that it is important to control speeders when construction workers are present during a road construction project. However, the NDP took it much farther - they deployed photo radar units in construction zones at night, on weekends, and even on holidays when no construction workers were present! The purpose for photo radar at construction zones is to protect workers, but instead photo radar was being used to simply trap unsuspecting drivers, and to make them pay unjustified traffic fines.



Most Manitobans did not believe that the reduced speed limits in construction zones applied when workers were not present, so they travelled at or below the regular posted speed limit, but above the construction zone speed limit. 60,000 unsuspecting Manitobans were caught and fined travelling below the regular posted speed limit, and were fined. One angry Manitoban, who was unjustly ticketed, went to court last month, and the Judge threw out the ticket. The court decided that when no construction workers were present, the regular posted speed limit applies.

An odd thing happened last week in the Legislature. The Minister of Justice agreed that the speeding tickets should never have been given, but he stated that he would not issue a refund - he was going to keep the money! It's an unbelievable statement - even though tens of thousands of Manitobans are not guilty, they still have to pay the fine! Where is the justice in the Justice Department? It's a sad day in Manitoba!

If you have any questions regarding this article, or any other issues or concerns in the Constituency, please feel free to contact me at 268-4664, write to me at Box 430, Beausejour, MB, R0E 0C0, email me at [geraldh@geraldhawranik.com](mailto:geraldh@geraldhawranik.com) or visit my website at [www.geraldhawranik.com](http://www.geraldhawranik.com).

### PUBLISHER

Don Norman

### EDITOR

Charles Norman

### LAYOUT AND DESIGN

Don Norman

### ADVERTISING DESIGN

Lori Pachkowsky

### SALES

Della Clark

### CONTRIBUTORS

Charles Norman

Stuart Jansson

Caitlin Laird

### SUBSCRIPTIONS

Local Rate: \$33.60

National & Urban Rate: \$44.80

Foreign Rate: \$112.50

Prices include GST & PST

2nd Class Mail # 1763687

(Postage paid in St. Georges, MB)

The **Echo**  
Winnipeg River

Box 40, St. Georges, Manitoba R0E 1V0

Place McDougall, St. Georges

email: [theecho@mtns.net](mailto:theecho@mtns.net)

Phone: 204-367-9488 • Fax: 204-367-9974

The Echo is an independent weekly newspaper published on Wednesdays in Pine Falls, Manitoba. Advertising and submission deadline is Friday at 3:00 p.m. prior to Wednesday's publication.

# News

## Public Hearing on RM Water Treatment Proposal

**By Charles Norman**  
The Municipal Board Public Hearing on the RM of Alexander's proposed Water Treatment Plant and Distribution System got underway a little after seven yesterday evening, (Tuesday, May 22), at the Great Falls Hall.

More than 300 people showed up for what was expected to be a heated discussion. Many of those included in the project are owners of property at Bracken and Leisure

Falls. Most of them own trailers and visit on weekends bringing any water needed with them. Many of them do not want a municipal water supply, object to being included in the project, and are incensed at the cost of it. Many believe that it would cost less to bring water from the Town of Lac du Bonnet's Treatment Plant.

The meeting took place as The Echo was being prepared to go to the printer. Full details will be covered in next week's issue.



Left to right: Budd Mager, Marilyn Walden (acting Chair of the Municipal Board), Jack Nicol, Rose Gibbons

## Pine Falls Five Pin Bowling League Banquet

**By Sharon Mignon**

The 69th Annual Pine Falls Bowling League Banquet was held at the Pine Falls Legion on Thursday, May 7th. Everyone enjoyed a delicious meal catered by Bostrom's Catering. The Seniors league joined our banquet and we had a very nice crowd to honour the various winners.

Prior to the presentation of the trophies, league president Evelyn Dodds stated words of remembrance for long time league bowler

Peter Richardson who passed away on May 5th.

The following trophies were presented.

High Averages - Kathleen Coss 183 and Trevor Sokoloski 209.

2nd High Averages - Doris Kahle 161, Sharon Tremain 161 and Jerry Gauthier 205.

High Single Games: Kathleen Coss 241 and Jerry Gauthier 338.

2nd High Single Games: Jessica Fontaine 246 and Cam Sokoloski 327.

High Triple Games: Kathleen Coss 723 and Cam Sokoloski 770.

2nd High Triple Games: Doris Kahle 602 and Jerry Gauthier 738.

Most Improved Female Bowler: Cynthia Brown.

Most Improved Male Bowler: Graeme Carlson.

Grand Aggregate winners were the Pinski's (Cam Sokoloski, Ron and Corrine Pachkowsky, Clair and Trevor Sokoloski). Grand Aggregate Runner-up went to the Misfits (Jerry

Guathier, Rene Cure, Heather Dufour, Diane Lavoie and Albert Lamoureux).

"A" Champs went to Casper's Friends (Jessica Fontaine, Cynthia Brown, Graeme Carlson, Mary-Jo Hevorka and Dave Fontaine). Runner up went to the Misfits as listed above.

Team High Single games went to the A-Team (Kathleen Coss, Mike Coss, Jonathon Coss, Dan Coss and Dwayne Duff). They bowled 1276. Team 2nd high single game went to the Pinski's as listed above. They bowled 1240.

Team High Triple game went to the Pinski's as listed above. They bowled 3589. Team 2nd high triple game went to the Richardson Team

(Evelyn Dodds, Sharon Mignon, Doris Kahle, Sharon Tremain, and Pete Richardson). They bowled 3329.

Perfect attendance prizes were given to Graeme Carlson, Albert Lamoureux and Sharon Tremain.

An award of appreciation plaque was presented to Sharon Mignon in recognition of her participation and valuable contributions to the success of the Pine Falls Bowling League.

Next season will mark the league's 70th anniversary. To mark this occasion, let's start working on getting more teams into the league. This past year we only had 5 teams. We will hold our bowling meeting in September

# News

## Forest Health Protection Act Proclaimed by Province

The protection of Manitoba's trees and forests will be strengthened with last week's proclamation of the Forest Health Protection Act, Conservation Minister Stan Struthers announced today.

"The Forest Health Protection Act is the first comprehensive, provincial legislation in Canada that protects forest resources from invasive forest threats," said Struthers. "Our province's forest resources are a major contributor to our economy and the well-being of our citizens. The forest industry provides jobs for thousands of Manitobans, mostly in remote communities."

Recent forest threats in other parts of Canada include the mountain pine beetle, emerald ash borer and gypsy moth. The mountain pine beetle has killed large areas of forests in British Columbia and Alberta and devastated the forest industry in those provinces. The emerald ash borer, an invasive pest from Asia, has killed millions of ash trees in

Ontario and adjacent areas in the last 10 years.

"The proclamation of this new act and its regulations better protects Manitoba's trees and forests from threats that could also harm the forest industry, urban forests and our natural landscapes," said Struthers. "It addresses invasive threats such as insect pests and diseases that have not yet arrived in Manitoba, as well as numerous pests we face in our current environment."

Dutch elm disease is an example of an invasive threat in Manitoba that continues to endanger thousands of elm trees in the province's urban areas. The new act replaces the Dutch Elm Disease Act and modifies restrictions on the movement of elm tree material to better limit spread of this serious disease.

The act also prohibits anyone from bringing harmful forest pests or certain woods such as raw ash products into Manitoba from areas infested with the emerald ash borer. This will help prevent the introduction and spread of new pests and dis-

eases in Manitoba.

The new Forest Health Protection Act also:

- sets out actions by provincial inspectors and officers to prevent or control an outbreak of an invasive forest threat including access to any land;

- allows notices to be issued prohibiting any movement of a forest threat or related material; and

- gives officers and inspectors the power to issue a quarantine order, prohibiting moving or tampering with any potentially infected forest products.

The new act also provides for establishment of a forest threat response zone. In such zones, moving, pruning or work on certain forest products could be prohibited. In addition, if it is deemed necessary to eliminate a forest threat in such a zone, any trees that are potential hosts for a forest threat could be removed or other actions taken to control the pest.

The new act also regulates licensing for professional arborists in Manitoba.

The regulation requires all arborists or tree-care workers to possess a valid license and carry identification and proof of insurance.

Manitoba will continue to work with businesses, industry and the public to reduce any impacts that new restric-

tions might have on them, said Struthers.

Proclamation of the new act and regulations will be followed by a public education campaign as individual Manitobans can play a crucial role in protecting the province from devastating invasive or native forest pests and diseases, the minister added.



Close-up of a mountain pine beetle.

**TRY YOUR DRUGSTORE** *first*

- Pharmaceuticals
- First Aid Supplies
- Hair Products
- Health & Beauty
- Stationery
- Greeting Cards
- Lottery Centre
- Gifts

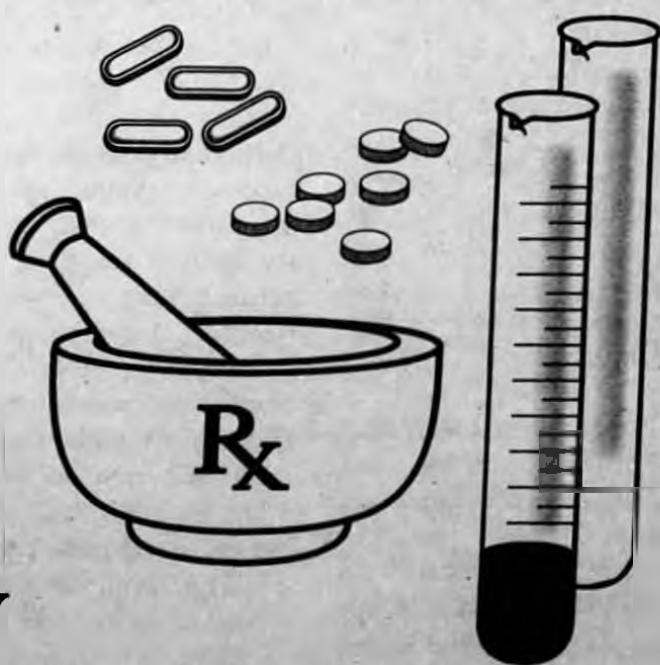
**PINE PHARMACY**

Open Monday to Saturday, 9:30 a.m. to 5:30 p.m.

367-2611

DISPENSARY

367-2517



**DAN'S EXCAVATING**

204-340-5783

Robert Services Dan Courcelles Box 1, Powerview, MB ROE 1 P0

*Denture Wearers*

**WE SPECIALIZE IN HARD-TO-FIT CASES**

**DAIEN DENTURE CLINIC**

22 Years at our MAIN OFFICE: 268-3488 10 Years at our SATELLITE OFFICE: 37-3rd St. S. Beausejour District Health Centre Lac du Bonnet

• Senior Discounts • We honor all Dental Plans

**BRYAN M. DAIEN, DENTURIST**

### North Eastman Health Association



is the Regional Health Authority responsible for planning, coordinating and delivering the full continuum of health services in North Eastman Manitoba to approximately 40,000 residents during the winter, and an estimated summer population of 80,000, including the Whiteshell, Winnipeg River and Eastern Beaches. Please visit our Website for more information at [www.neha.mb.ca](http://www.neha.mb.ca)

### Current Employment Opportunity Recreation Worker, Casual Pine Falls

**Qualifications:**

- Completion of a recognized Activities/ Recreation Program required.
- Applicants with certificate will be given priority. Non-certified applicants will be considered if there are no certified applicants.
- Previous related experience is required.
- Genuine interest in the health care of the elderly and disabled.
- Ability to work independently.
- Willing to train.

We are committed to a workforce that is reflective of the communities we serve, and actively recruit people with diverse backgrounds, experiences and perspectives to ensure services are delivered in a culturally sensitive manner.

Interested applicants are invited to submit a resumé and cover letter by **June 2, 2009** in confidence to: Human Resources Assistant, North Eastman Health Association Inc., Box 339, Pinawa, MB. ROE 1L0, Fax: 204-753-2015, Email: [hr@neha.mb.ca](mailto:hr@neha.mb.ca)

We thank all applicants for their interest. However, only those candidates being considered for an interview will be contacted.

Manitoba E-waste Round-up  
May 15 to October 30, 2009

**Thank you Manitobans**  
for recycling over 1 million kilograms of old electronic equipment in the last 2 years

**Overwhelming**

That's the only way to describe Manitobans' reaction to the residential collection of e-waste around the province last summer.

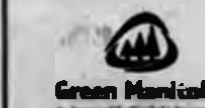


Thousands of old TVs, VCRs, stereos, microwaves, phones, computer equipment, laptops, printers, scanners, fax machines and copiers were dropped off at temporary collection depots around the province. All the e-waste collected was sent for proper end-of-life recycling - not to landfills.

**We're doing it again - from May 15 to October 30, 2009**

Due to tremendous public support, the province has committed additional resources to deliver this program. Details on e-waste depots, including start dates, and hours of operation are available at: [www.greenmanitoba.ca](http://www.greenmanitoba.ca) or call toll-free: 1-866-460-3118.

Thanks to all participants, especially the local agencies, communities and businesses that make this possible.



# Nature

## Ruby-Throated Hummingbird

By Charles Norman

There are between 325 and 340 species of hummingbirds in the world, but Manitoba has only one of them. (The actual species count depends on who is doing the classification).

The Ruby Throated Hummingbird is the only hummingbird that regularly breeds in Manitoba, but the Rufous Hummingbird is, an occasional visitor and there are several records of it breeding here. Its normal range is British Columbia north to the Queen Charlotte Islands. The male is cinnamon red with a green patch on its head and a scarlet throat patch. The female is plainer—with a bronze-green back and brown sides. The male Ruby Throated Hummingbird has a metallic green back, is light grey underneath, and has a ruby red throat patch which may appear black but flashes red as the bird moves. There is no official record of any other hummingbird being seen in Manitoba, but a Black Chinned Hummingbird was seen at Pebble Springs in Belair close to Lake Winnipeg

three years ago. To be an official record it has to be seen by at least two experienced bird-watchers, or to be recorded in a photograph. Since this one was only seen by this writer it did not make it into the record books. The black chinned hummingbird is larger than the familiar ruby throated, it is greenish, with a black or violet throat. It is a rare breeder in the southern part of the British Columbia Interior.

We should not feel too bad about having only one hummingbird in Manitoba, All of Europe, Asia, Africa and Australia does not have even one. Hummingbirds are native to North and South America and are found nowhere else, although there is a thirty million year old fossil, found in Europe, in a clay pit, near Heidelberg, Germany, that is said to be a hummingbird.

The Ruby-throated Hummingbird is tiny, three or three and a half inches long from the tip of its beak to the end of its tail. It is so small that bumblebees, which can be up to an inch long, can complete with it at a source of nectar. It is not uncommon to

see a humming bird buzzing a bee at a home hummingbird feeder until the bee gives up and moves on. Humming birds compete with each other in the same way.

A hummingbird feeds by plunging its long beak into a flower and thrusting its tongue into the nectar, (the tongue has grooves on either side of it to facilitate the drinking of the nectar. They prefer nectar with high concentrations of sugar, (Home feeders are usually filled with a 25% solution of cane sugar); they tend to ignore sugar sources with less than a 10% concentration. For deeper flowers like tiger lilies they will often pierce through the neck of the blossom. They are attracted by bright red, orange and yellow colours. Nectar does not supply all the nutrients needed by the hummingbird and it supplements its diet by feeding on small insects.

While hovering, the Ruby Throated Hummingbird beats its wings at up to 75 times per second, which produces the characteristic hum. Hummingbirds can fly backwards and are the only bird

species that can do this.

After breeding the male takes no further part in the raising of the family. The female builds the nest without any help from the male. It is usually between ten and thirty feet above the ground, at a location where it is protected from rain by covering leaves. It is built from plant down, like the fluff of catkins, which she sticks together with spider web. She then sticks bits of lichen to the outside making the nest look like a knob on the branch. She moulds the inside of the nest with her body and finishes the rim with her beak.

She lays two white eggs, which are about the size of a large pea. She incubates the eggs for about two weeks, during which time she leaves the nest to feed only occasionally. She is cautious in leaving and returning to the nest.

When the young hatch they have short, stubby beaks, have no feathers and their eyes are closed. This begins to change almost at once. After five days the eyes open and feathers develop. They are fed by the female regurgitating food directly

into their wide-open beaks. She is meticulous in making sure that each chick gets its fair share of nourishment. She is also meticulous in keeping the nest clean, and removes droppings regularly.

The range of the Ruby Throated Hummingbird is from the Rocky Mountains to New Brunswick and Nova Scotia. The Winnipeg River is close to the northern limit of its range. It migrates to the Gulf Coast and the Yucatan Peninsula. In spite of its size it can cross the 500-mile stretch of the Caribbean with little difficulty. (It used to be said that they hitched a ride on migrating Canada Geese, but this is just a folk tale).

For those who like to enjoy the Ruby Throated Hummingbird from their decks in summer, hummingbird feeders are available. They should be placed at least fifteen feet from windows, and filled with a solution of sugar and water in a ratio by volume of one of sugar to four of water. The solution should be boiled to prevent fermentation and should be changed at least once a week; no artificial flavourings or artificial colourings should be used.



# Community



An algae bloom on Lake Winnipeg

## Lake Friendly Label Campaign

By Laura Tuttle

Have you noticed the red and green algae that has been bunching up between the rocks and along the shores of East Beaches? The good news is that early in May a group of concerned business people from East Beaches met with the South Basin Mayors, Reeves and the Minister of Water Stewardship to tackle the issue of health for Lake Winnipeg. Lake Winnipeg has a drainage area of nearly one million square kilometres. Surrounding the Lake are more than 5.5 million people and at least 20 million livestock. For every one square kilometre of lake surface area, there are 40 square kilometre-

tres of watershed. The lake's watershed extends west to the Canadian Rockies and east to within 20 kilometres of Lake Superior. Consequently, nutrients originate from both local sources within Manitoba, as well as from sources throughout the watershed. So, while the problem is massive in scope, these business owners are hoping to encourage action on a local level.

To address the problem, retailers in East Beaches are being encouraged to provide products for your dishwashers, washing machines, bathtubs and sinks that are eco-friendly and safe for both the undercurrents and gleaming waters of our home base. The aim is to replace poten-

tially harmful products with EcoLogo™ products tested and approved by Environment Canada.

Along with the "Lake Friendly Label Campaign"

the Committee is running a contest called "Do your part through art" within the schools that line the shores of Lake Winnipeg. Students from all grades are eligible

and encouraged to participate. The winning logo will be used on promotional materials that encourage the public to purchase Lake Friendly products

our mortgages  
are easy as pie.  
(the store-bought kind)



welcome to the bright side...

...where applying for a mortgage won't leave you tired, stressed out or covered in flour.

For brighter lending solutions, contact us today.

SUNOVA

bank brighter.  
www.sunovacu.ca

# Introducing

THE MANITOBA ENHANCED IDENTIFICATION CARD

A voluntary affordable alternative for travelling to the U.S. by land or water

As of June 1, 2009, a new U.S. law requires that Canadian citizens 16 and older have a passport or an approved alternative to enter the U.S. by land or water.\* The Manitoba Enhanced Identification Card is a voluntary option for this purpose.

Read the Applicant's Guide and find out if the card is right for you. Guides are available from your local Autopac agent or online at [www.mpi.mb.ca](http://www.mpi.mb.ca)

\*To fly to the U.S. a passport is required.

Don't delay—book your appointment today.

WWW.MPI.MB.CA

Manitoba  
Public Insurance

Manitoba



# East Beaches

## East Beaches News

by Laura Tuttle  
**Has Spring Finally Sprung?**

Although the weather is downright dismal and disappointing, especially for gardeners, there are some definite signs of Spring. Lawnmowers have occasionally been heard throughout the neighbourhood and Garage Sale Signs are making steady appearances. Weekend traffic to East Beaches has definitely increased and many cottages are getting aired out for the first time since Thanksgiving. The Goldfinches, Orioles and Hummingbirds have all found their way back to the

our feeders. The male hummers are just as territorial as ever. A large white Egret, not usually found in the East Beaches and clearly off course, has been spotted and confirmed by several dedicated bird watchers. My poor husband thought he saw a Stork which isn't possible except in picture books and in Spain. It turns out he too saw the Egret a close cousin of our native Herons. I haven't seen the Great Blue Herons yet this year but they are consistent tenants and a pair usually nest in a field not far from our home. May 19th is when I start watching for their annual appearance. The pelicans are back in droves and a friend said she saw a flock of white Tundra Swans on their way North. Plus, there is an Osprey making it's nest in the tower built for that purpose at the Grand Marais Recreation Centre.



Pelicans are back in droves on Lake Winnipeg

### Treasures from the bygone days

The Grand Beach and Area Development Corporation are looking for treasures from the

bygone days of the Moonlight Express, the G.B. Dance Hall and other artefacts that might be appropriate for the Heritage Building which will be the first structure to be built at the "Destination Grand Marais" site.

### East-Beaches Community Newsletter

Mailboxes have been stuffed with the first edition of the East Beaches Community Newsletter courtesy of the Seniors Scene in Victoria Beach along with their partners; the H.E.L.P. Centre, the Victoria Beach Sports Club, the Grand Marais & District Senior Citizens and the Grand Marais Recreation Centre. You will find four pages of information, phone numbers and Community events planned, postponed or "on the cooker". The June 09 edition of the Newsletter is well thought-out and a handy reminder of all that the East Beaches has to offer in the way of community events. If you don't have a mailbox on the mailing list (i.e. you live South of Grand Marais and

pick-up your mail in Beaconsia) copies are also available at local retail establishments.

### Wellness Centre AGM

Members of the East Beaches Recreation & Wellness Coalition are reminded to attend the Annual General Meeting on Saturday May 30, 2009 at Walter Whyte School at 1:00 pm. Invited guests include the Honourable Kerri Irvin-Ross Minister For Healthy Living, Mayor Steve Strang & the Council from the RM of St. Clements, Reeve George Harbottle and Council members from the RM of Alexander, representation from the RM of Victoria Beach plus Wellness coordinators from both the Interlake and North Eastman Regional Health Authorities.

### EAST BEACHES WELLNESS COALITION ANNUAL GENERAL MEETING

DATE: MAY 30, 2009 TIME: 1 pm  
 LOCATION: Walter Whyte School  
 (Hwy 58 near Grand Beach)

WE ARE MOVING FORWARD....  
 FIND OUT THE LATEST PLANS FOR THE WELLNESS CENTRE

More Info....Email: ebrwc@mts.net or Ph: 756-3035

General Store



Real Estate

REALLY REAL ESTATE  
 Judy Calvert-Pierce  
 Shauna Pierce  
 Grand Beach & Area  
 (204) 754-2709  
 Winnipeg:  
 (204) 250-9180  
 Toll Free:  
 1 (800) 559-7873  
 Email: sold@beachesrealty.com  
 www.beachesrealty.com

Westshore Realty Inc.  
 Cheryl Demiduk  
 Broker

Window Cleaning

756-5900

NOW OPEN! TEE TIMES: 756-2345  
**Grand Pines**  
 Golf Course

**Early Twilight Special**  
 Sunday to Wednesday  
 after 2:00pm

**\$25.00** Walking  
 PER PERSON  
**\$35.00** Riding  
 PER PERSON

Excludes Holiday Sundays  
 STARTS MAY 3, 2009  
 VALID UNTIL JUNE 30

**Call 204-756-2345**  
 Located on Hwy. 59  
 15 kms. North of Grand Beach  
 www.golfgrandpines.com

# Community

## Health Corner

Please forward health related questions to: Health Corner, Box 1030, Lac du Bonnet District Health Centre; phone: 345-8647; or Email corvis@neha.mb.ca. For more health information, Please, visit the NEHA website: www.neha.mb.ca.

### Asthma

How is asthma controlled?

Asthma is a lung condition that impairs breathing. Inflammation and airway constriction are the two mechanisms that cause the symptoms of asthma. Inflammation is the main feature.

Diagnosis can be chal-

lenging as there is no one single test that can be used. Medical history of symptoms, spirometry and medication challenges can all be used to diagnose asthma. Diagnosing children under 5 years old is an even greater challenge, as young children can not co-operate to perform some of the tests. There are several levels of asthma ranging from mild

the severe. Management of asthma is based on avoidance of triggers and controlling symptoms with medications. Education of the patient by a health care provider on triggers, medications, and monitoring and knowing what to do in a flare up is a very important part of managing asthma. Learning what a person's triggers are, will help in avoiding those triggers. Some triggers may be smoking, second hand smoke, dust mites, mold, pet dander, cold air, perfume, allergens (things that cause an allergic reaction), certain medication and many more. Infections like the common cold and influenza may cause a flare up of the asthma. Flu vaccines are recommended for people with asthma. It appears to be critical to decrease the amount of dust mites in the house to obtain good control of asthma.

Many things can be done in the home to decrease dust mites. Talk to a health care provider for more information. A person with asthma may need to use medication before going out into the cold air and/or exercising. These are only some of the things that can be done to avoid triggers. There are 2 different medications: relievers and preventers. Relievers work quickly and relax the airway. Preventers work on the inflammation, they should be taken on a regular basis as prescribed by the health care provider. Preventers work slowly and should not be taken in an emergency. Keeping track of symptoms in a diary can be a great help to detect flare ups. Some people may use a meter (peak flow meter) daily to measure the status of their breathing. It is recommended that people with

asthma have an action plan and use it as taught by their health care provider. Poor control can lead to airway remodeling, may cause permanent damage.

Written by Myriam Duke RN, BScN, CAE.

Sources:  
 Canadian Asthma Consensus Report, 1999  
 Adult Asthma Consensus Guidelines Update, 2003  
 Canadian Pediatric Asthma Consensus Guidelines, 2003 (updated to December 2004)

## A Faith Perspective:

By Pastor Jake Doell

### Turning Your Pain into Blessing



We live in a culture that tries to avoid pain, whether physical, emotional or spiritual. I'm thankful that medical science has found many good ways of dealing with physical and emotional pain. Yet all of these methods are only temporary. Pain is only a signal of a deeper issue i.e.: a toothache is caused by a cavity and the pain will only go away permanently when the cause is looked after. When stress is not dealt with in a healthy way it can cause depression and other emotional pain. Temporary relief may be found in the right medication. But only when we learn to cope with stress in healthy ways can we rise above the pain.

It is interesting to note that since last fall when the wheels began to fall off our economy, the sale of alcoholic beverages have gone up and gambling has also increased. Why? I believe that more people are turning to temporary solutions to help them cope with the stress of it all. Many of these solutions often create more pain instead of fixing it.

Pain is also a reality of life. No one can avoid all the painful experiences of life. We all have to deal with pain at some point. How we deal with the hurt will also deter-

mine whether we will live above the situation or get trapped underneath it.

I'm glad that God has provided a way for us not only to cope with our pain but to rise above it. His promise to us is this: "We were accounted as sheep for the slaughter. No! In all these things we win an overwhelming victory through Christ who proved His love for us." (Romans 8:36&37)

Sometimes it feels like life is trying to do us in. Disappointments, betrayals, loved ones passing on, can all bring us deep pain. When we receive Christ's forgiveness we can take and turn our pain into blessing. Forgiveness is God's prescription for dealing with many of our emotional hurts as well as our spiritual pain of being separated from God. Often people receive relief from physical pain after they have dealt with some of the deeper emotional and spiritual issues in their lives. Remember, our Creator also wants to be our Healer.

INVEST IN STRENGTH. INVEST IN STABILITY.

## MANITOBA BUILDER BONDS

ON SALE MAY 19 TO JUNE 2

Builder Bonds Series 11 are fully-guaranteed by the province of Manitoba and provide you with three great ways to invest in our province and save for the future.

ASK YOUR FINANCIAL ADVISER WHICH BOND IS BEST FOR YOU.

<b>2.75% ADJUSTABLE RATE BOND</b>	<b>2.75% FIXED RATE BOND</b>	<b>2.75% FIVE-YEAR FIXED RATE BOND</b>
offering an adjustable rate of return which pays interest annually and is redeemable annually.	offering a fixed rate of return, which pays interest annually.	offering a fixed rate of return, which pays either annual or compound interest.

Builder Bonds are available for as little as \$100 at participating banks, credit unions, caisses populaires, trust companies and investment dealers throughout Manitoba. For more information on Builder Bonds Series 11 or previous issues of either Builder Bonds or Hydro Bonds, please call 1-800-565-0350 or visit manitoba.ca.



# RECREATION UPDATES

For Powerview/Pine Falls, St. Georges & R.M. of Alexander

**PINEVIEW RECREATION COMMISSION** - Lori Vialoux, Rec. Director  
 Box 281 Powerview, MB. R0E 1P0 - 3 Walnut Street, Pine Falls  
 Ph: 204-367-9142 Fax: 204-367-8605 E-Mail: prarec2003@yahoo.ca

## EXERCISE PROGRAMS

**Body Sculpture**  
 Walter Whyte School, Grand Marais  
 Instructor: Natasha Joy  
 Monday's & Thursday's  
 6:30 - 7:30 PM  
 10 classes for \$60.00  
 Moderate - High intensity. Class is always different and modified for every level.  
 Need a minimum of 10 people for the class. To register contact Natasha 756-3868 or email inatasha@mts.net

## Family & Beginners Fitness

Last Chance Before Summer  
 Pine Falls School Gym  
 May 4 - June 24  
 Monday & Wednesday's  
 5:30 - 6:30 PM  
 \$60.00 Adult \$40.00 Student  
 Instructor: Kim Bonekamp  
 For youth ages 13+ with or without a family member.  
 Includes cardio, circuit training, strength & flexibility.  
 Need 10 confirmed registered to begin the class.  
 Contact Rec Office 367-9142

## Strength For Seniors

Pine Falls School Gym  
 Monday's & Wednesday's  
 10:00 - 11:00 AM  
 \$60.00 per person  
 Instructor: Kim Bonekamp  
 Free program open to all seniors 55+. Class includes walking, exercise ball, stretching & resistance.  
 For more info contact Kim 367-2107

## Total Body Workout

St. Georges School Gym  
 Monday & Wednesday's  
 7:00 PM - 8:30 PM  
 Thursdays 7:00 - 8:00 PM  
 Instructors: Nick Bonekamp & Paul Roberts  
 \$20.00 per month/ Family plans available  
 Kickboxing, Stretching, Skipping, Rubber Bands, Circuits & Felt Pads  
 Loose Weight & Feel Great!  
 Contact Nick 367-2702 or Paul 367-8018

## Rise & Shine Fitness Class

Last Chance Before Summer  
 May 4 - June 24  
 Pine Falls School Gym  
 Monday, Tuesday, Wednesday & Thursday  
 6:30 AM - 7:30 AM @ Pine Falls School Gym  
 \$80.00 per person  
 Instructor: Kim Bonekamp  
 Program includes aerobics, circuits & boot camp training  
 To register call the Pineview Rec office 367-9142 or Kim Bonekamp 367-2107 or email kbonekamp@hotmail.com

## Seniors Exercise

Golden Leisure Club, Pine Falls  
 Every Mon, Wed, Thurs & Fri  
 10:15 - 10:45

## Rivers North Fitness Coop

\$100.00 membership  
 \$250.00 annual user fee with membership  
 \$300.00 annual user fee without membership  
 For more info contact Bev Dube 367-8064 or Linda Cyr 367-2382

## SPRING ACTIVITIES

**Interior Design 101**  
 Oasis Building Supplies, Powerview  
 Saturday, May 9  
 9:00 AM - 1:00 PM  
 \$40.00 Per person  
 Maximum of 24 participants.  
 Purchase tickets at Oasis Building Supplies  
 367-367-9663 or Pineview Rec Office 367-9142.

**Introduction to Creative Writing**  
 Bibliothèque Allard Library, St. Georges  
 \$80.00 per person  
 Participants: 6(minimum)-12(maximum)  
 Instructor: Donna Besel  
 April 23-June 4  
 Do you like to write? Feel a need to express Yourself clearly? Find encouragement, fun and inspiration in a creative writing classes. To register contact Bibliothèque Allard Library 367-8443 or Pineview Rec Office 367-9142

## Pine Falls Golf Memberships

2009 Memberships forms are now available at the Pineview Rec Office.

## Pine Falls Swimming Program

Session 1: July 6-17  
 Session 2: July 20-31  
 Session 3: August 3-14  
 Duck (Parent & Child Program), Sea Turtle, Salamander, Sunfish, Red Cross Levels 1-10  
 For registration and fees contact Rec Office 367-9142

## Soccer

North Eastman Soccer Association  
 Laie Fee of \$5 after April 20  
 Beaches & Pineview team forms available at  
 Pineview Rec Office, Pine Falls School

Tykes \$40.00 (Born 2005/04/03)  
 Sprockets \$45.00 (Born 2002/01)  
 Mavericks \$50.00 (Born 2000/09)  
 13 & Under \$60.00 (Born 1998/97)  
 16 & Under \$60.00 (Born 1996/95/95)

## Softball

Powerview-Pine Falls, St. Georges R.M. of Alexander  
 Registration at Rec Office  
 \$10.00 per child  
 Starting in May  
**PHat Camp**  
 Physical Arts Training Camp  
 Victoria Beach: July 27-31  
 Powerview- Pine Falls: August 10-14  
 Registration forms and prices will be available next week.  
 This year's theme is Way of the Young Legends.

## FOR ALL AGES

**Pine Falls Golf Memberships**  
 2009 Memberships forms are now available at the Pineview Rec Office.

## FESTIVALS & EVENTS

**Wine Tasting Evening**  
 Pine Falls School Gym  
 Friday, May 29th  
 Over 55 different wines to sample as well as breads & cheeses as well as a silent auction. Tickets are \$25.00 each and available at Wings of Power 367-9641 or Pine Falls Liquor Mart 367-2965  
 Money raised for this event will be put toward the Wings Of Power Breakfast for Learning Program.

## Victoria Beach Drama Club

## CHILDREN & TEENS

**Hip Hop & Jazz Dance**  
 Pine Falls School Gym  
 Tuesday's & Thursday's  
 Instructor: Alisha Carlson  
 Kids Program Ages 3-4 \$15.00  
 Kids Program Ages 5-7 \$15.00  
 Youth Program Ages 9-11 \$25.00  
 Youth Program Ages 12+ \$25.00  
 Adult Program \$25.00  
 For registration & fees contact 367-9142

## Babysitter Safety Training

Ecole Powerview School  
 Walter Whyte School  
 June 12 & 19th  
 Ages 12+(or turning 12 in 2009)  
 4:00 PM - 9:00 PM  
 \$25.00 per student  
 Karrie Kettle, Powerview School 367-2296  
 Hea Henderson, Walter Whyte 754-2240  
 Lori Vialoux, Pineview Rec 367-9142

## First Lake Winnipeg Beavers

Walter Whyte School  
 Monday's 3:30 - 5:00 PM  
 Ages 3-5 (Male & Female)  
 October - May  
 Games, crafts, music, the outdoors & spiritual fellowship.  
 For more info contact Carol Laing 754-6232 or Sue 754-2541

## Family Fitness

New Session Starting May 2  
 Pine Falls School Gym  
 Monday & Wednesday's  
 5:30 - 6:30 PM  
 Instructor: Kim Bonekamp  
 For youth ages 13+ with or without a family member.  
 Includes cardio, circuit training, strength & flexibility.  
 Need 10 confirmed registered to begin the class.  
 Contact Rec Office 367-9142

## SENIORS

**GOLDEN LEISURE CLUB**  
 PINE FALLS  
**Canada**  
 Wednesday & Friday's  
 1:00 PM  
**Cribbage**  
 Every first Monday of the month  
 1:00 PM

## SENIORS SCENE

**VICTORIA BEACH**  
**Writing Group**  
 Every 4th Monday of the Month  
 1:00 PM  
**Advance Line Dancing**  
 Every Tuesday @10:00 AM  
**Quilting**  
 Every Thursday 10:00 AM - 3:00 PM  
**Carpet Bowling**  
 Every Friday @1:30 PM  
 For more info contact Judy 756-3132  
 www.seniorsceneinc.com

## FOR ALL AGES

**Pine Falls Golf Memberships**  
 2009 Memberships forms are now available at the Pineview Rec Office.

## FESTIVALS & EVENTS

**Wine Tasting Evening**  
 Pine Falls School Gym  
 Friday, May 29th  
 Over 55 different wines to sample as well as breads & cheeses as well as a silent auction. Tickets are \$25.00 each and available at Wings of Power 367-9641 or Pine Falls Liquor Mart 367-2965  
 Money raised for this event will be put toward the Wings Of Power Breakfast for Learning Program.

## Victoria Beach Drama Club

## Presents

**The Hysterical History of the Trojan War**  
 Victoria Beach Sports Club  
 June 13, 2009  
 \$30.00 Per person  
 Includes a catered traditional Greek dinner.  
 Cocktails 5:30PM/Dinner 6:00 PM  
 Advance tickets only. For tickets call Tannis 756-3474

## Canada Day Pool Party

Wednesday July 1st  
 Pine Falls Pool  
 BBQ, Games & Pool Activities

## 3rd Annual Beaches 1/4 Marathon & 1/4 Marathon

July 25th  
 Located in Hillside Beach starting at 8:00 AM  
 For more info contact 756-3868  
 Email: inatasha@mts.net  
 Register online: www.events.runningroom.com

## Festival Chateauguay

July 17, 18 & 19, 2009  
 Monday's 3:30 - 5:00 PM  
 Weekend celebration of culture, music, food, children's activities, fishing tournament, sand castle building and great family fun.  
 For more info contact Diane 367-9970

**Summer Winds Music Festival**  
 Victoria Beach Sports Field  
 July 25, 2009  
 Music, children's activities, great food & beer gardens.  
 3rd Annual advance tickets are available.  
 Visit www.summerwindsmusicfestival.com

## PUBLIC LIBRARIES

**Bibliothèque Allard Regional Library**  
 St. Georges  
 Operation Hours  
 Tuesday 10:30 AM - 5:00 PM  
 Wednesday & Thursday 12:00 PM - 8:00 PM  
 Friday 12:00 PM - 5:00 PM  
 Saturday 10:00 AM - 2:00 PM  
 Internet Access Site

## Beaches Library

Located in Walter Whyte School  
 754-4007  
 Operation Hours  
 Tuesday 9:00 AM - 12:00 PM  
 Thursday 4:00 PM - 8:00 PM  
 Saturday 10:00 PM - 2:00 PM  
 Internet Access Site

## Pine Falls Library

Located in Pine Falls School 367-8983  
 Open Monday - Friday  
 1:00 PM - 3:00 PM  
 Internet Access Site

# Thank you

The Winnipeg River Midget A Hockey Club would like to thank the following businesses for their contributions during Midget A Hockey Provincials held in Pinawa this past March. Many thanks as well, to all the parents and volunteers who helped make this a successful event.

## Gold Sponsors

Osis Building Supplies  
 RONA Hardware  
 Tanco Union  
 South Beach Casino  
 Whiteshell Metal Shop/Chairs  
 Blaney Contracting  
 Country Classic Cedar Furniture

Papertown  
 Pine Pharmacy  
 Granite Hills  
 ProGrinding  
 Sungro Horticultural  
 AECL Union

## Silver Sponsors

Dave's Furniture & Appliances  
 Midway Foods  
 Town of Pine Falls/Powerview  
 Powerview Agencies  
 Journeyman's Home Inspection  
 RM of LdB  
 Al Miesner Limited  
 St. Croix Cycle & Marine  
 Eaglevision Resources  
 Eastman Appliance  
 Pinawa Lion's Club  
 Sychuk's Carvings  
 Pinawa Community Development

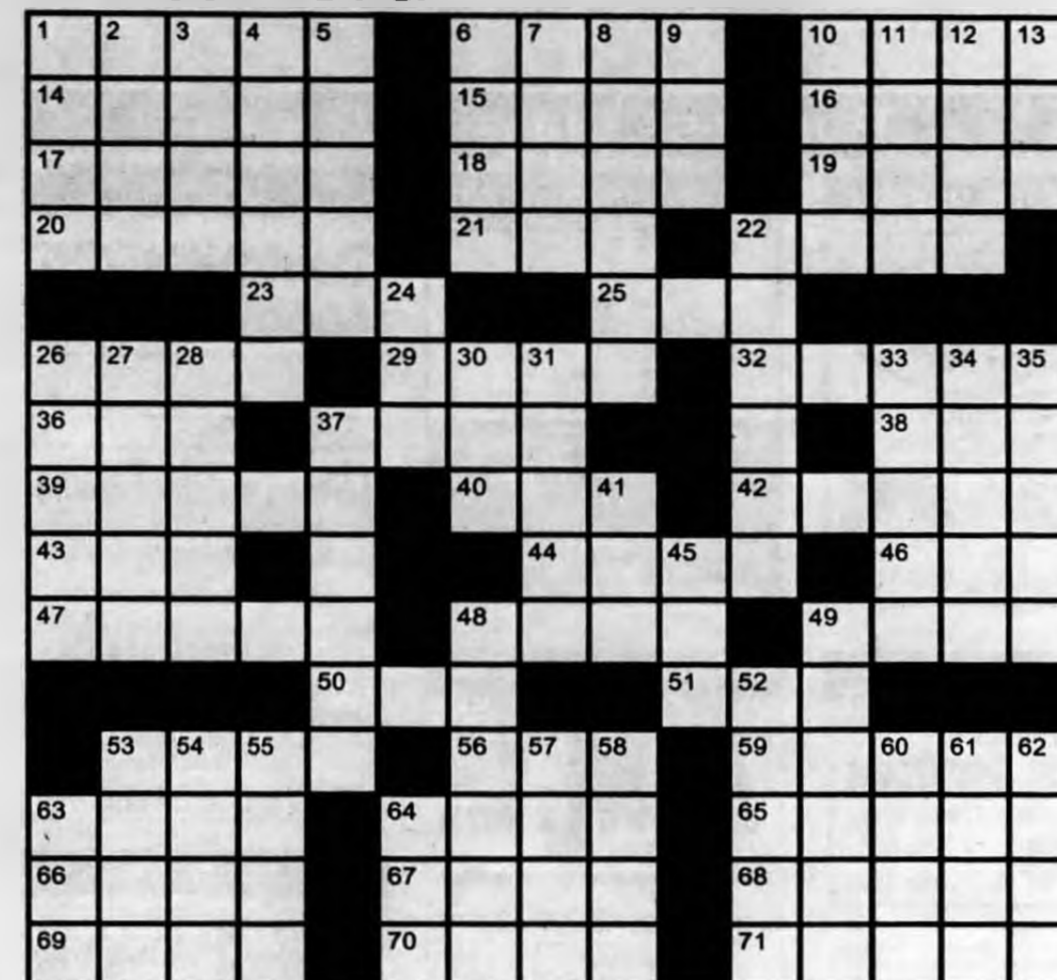
Chicken Chef  
 Pineview Electric  
 Pine Falls Service  
 Broadlands Mall  
 Town of LdB  
 Corner Auto  
 Arsenault Trucking  
 Pinawa Co-op  
 Weibe Trucking  
 Ray's Mobile  
 Baking by Dawn

## Bronze Sponsors

Pinawa Woodworks  
 Pinawa Golf Club  
 Pinawa Solo Market  
 Sunova Credit Union  
 Horseshoe Wild Rice  
 Blue Water Physiotherapy  
 Lac du Bonnet Co-op  
 Drifter's Restaurant and Lounge  
 Dykstra Plumbing & Diving  
 Winnipeg River Rentals  
 Yellow Door/The Source  
 Powerhouse Yamaha  
 Provincial Helicopters

AECL  
 Darrel Tarrant-CA  
 Manitoba Lodge  
 Boisjoli Painting  
 Soks Service  
 Horizon Insurance  
 U.S. Exteriors  
 Camation Corner  
 Seddon's Esso  
 Myles Corner Store

# Crossword



Copyright © PuzPuz Puzzles 2008

## Across

- Scouting group
- Order to a broker
- Alpine lift
- Therefore
- Arborist's concern
- Hodgepodge
- Cove
- Matured
- Au naturel
- Fashion
- Front of a vessel
- Arid
- Sphere
- Aardvark's morsel
- Shopping
- New Mexico's state flower
- Amazement
- Possess
- Male sheep
- Russian country house
- Swerve
- Asinine
- Epoch
- Low-lying area
- Male offspring
- Lukewarm
- Mexican currency

## CRYPTIC PUZZLE



K JCXJ EQOG VQ VJG EQPENWUKQP VJCV  
 RQNKVKEU KU VQ UGTKQWU C OCVVGT VQ  
 DG NGHV VQ VJG RQNKVKEKCPU --  
 EJCTNGU FG JCWNG

- Secondhand
- Pasture
- Pester
- Ballyhoo
- Recede
- Toy model material
- Does and bucks
- Dog biter
- Burger topper
- Craving
- Flair
- Declare to be true
- Upright
- Equals three feet
- constrictor
- West Pointer
- Cognizant
- Review
- Evergreen climbing plant
- Bequeath
- Unrefined
- Small boat
- Improve
- Take care of
- Existed
- Slow pitch
- Spanish dish
- Land on Lake Victoria
- German sub (hyph)
- Group of cattle
- Safecracker
- Quarry
- Grizzly
- Group of musicians
- Tree branch
- Gardener's purchase
- Waggy
- Owed and payable
- Slightly insane

## Down

- "Now hear \_\_\_!"
- Lease
- Exclusively
- Leopardlike cat
- O'toole
- Wild guess
- Consequently
- Wiggle room
- Digital display
- Infect
- Glaze over

## Last Week's Answers



Each letter represents another letter in the alphabet. See if you can break the code to figure out the famous quotation

## Last Week's Solution

I HAVE COME TO THE CONCLUSION THAT POLITICS IS TOO SERIOUS A MATTER TO BE LEFT TO THE POLITICIANS -- CHARLES DE GAULE

# Weekly Horoscopes

May 21 - May 27

**ARIES** (Mar. 21 - April 20) You may not be too pleased with the actions of those you live with. Do a little extra work at home. Financial limitations may add to your depression. Look out for those wanting to push you into a disagreement.

**TAURUS** (Apr. 21 - May 21) You may not be too pleased with the actions of those you live with. Do a little extra work at home. Financial limitations may add to your depression. Look out for those wanting to push you into a disagreement.

**GEMINI** (May 22 - June 21) Don't let emotional upset force you into the poorhouse. You can prosper if you invest in property or mutual funds. Listen to the advice given by others. Partnerships with creative people could lead to financial gains.

**CANCER** (June 22 - July 22) Emotional situations could bring out your stubborn nature. Focus on your own domestic problems. Travel if it's needed to start the ball rolling. Use your quick wit to win points and friends.

**LEO** (July 23 - Aug 22) Your home environment appears to be a little shaky. Don't let situations get out of hand. You are likely to reveal information unintentionally. Travel opportunities look positive, but be cautious while driving.

**VIRGO** (Aug. 23 - Sept. 23) Use your inventiveness to find solutions. Your time, not your cash, will do a lot more for your relationship. Stubborn about making changes around your home. You will be subject to pushy individuals if you get involved in uncertain organizations.

**LIBRA** (Sept. 24 - Oct. 23) Close deals that have been up in the air and move on to new ones that appear to be profitable. Don't hold back; go with the flow and take a bit of a chance. Your health may suffer if you don't control your present situation. Be careful that you don't overextend yourself.

**SCORPIO** (Oct. 24 - Nov. 22) Social activity with friends and relatives will be most successful. Relatives may play an important role in your social activities. You will have some problems with children, but if you are patient you will win their favor. You will meet potential new mates through friends or relatives.

**SAGITARIUS** (Nov. 23 - Dec 21) Your personal life will still be experiencing difficulties and you are best to avoid the issues for the time being. Get together with friends for some competitive physical activities. You mustn't give too much to your children. Unexpected bills will leave you a little short.

**CAPRICORN** (Dec 22 - Jan. 20) Involvement in groups of interest will bring you in touch with important individuals. Consider a conservative investment that will stay solid when everything else goes sour. You will benefit by taking care of other people's concerns. Include the whole family or those you love.

**AQUARIUS** (Jan. 21 - Feb. 19) You won't be well received by superiors or by your spouse. Try to spend some time on your own. Be quiet about your intentions or ideas that might bring added cash. You should sign up for creative courses. Concentrate on your work.

**PISCES** (Feb. 20 - Mar. 20) You will be emotional about your personal life. Secret intrigues could get you into trouble. Try to take care of the needs of those you love. Use your head and do things to your liking.

# Classifieds



**William (Bill) James Eisler**  
January 25, 1924 to  
November 24, 2008

The family of Bill Eisler would like to invite family and friends to a Celebration of his Life on June 20, 2009 from 1p.m. to 4p.m. at his beloved Lester Beach Lot 9. We ask that you bring your memories and join us in food and drink to celebrate a unique man. You may RSVP to (204) 754-3103

**Card of thanks**  
We would like to express our sincere thanks to all of our family, friends and neighbours for your caring compassion and condolences during the recent passing of Peter Richardson. Special thanks to the Royal Canadian Legion Pine Falls Branch #64 Colour Party and Jake Lemire for their assistance with Peter's funeral and to Barry Cyr for delivering the eulogy. Peter would certainly have enjoyed your comments. Thank you to the Legion Branch and Ladies Auxiliary who provided and served the lunch at Peter's funeral.  
Your cards, phone calls, flowers, food, donations and expressions of sympathy were all very much appreciated. It was very comforting to read the different comments in the cards that people took time to jot down. They all reflected who Peter was during his life time.  
An extra special thank you to my Mother, Rubena Mignon, for always being there when I need her strength to get me through difficult times.

**House for Sale**  
**House for Sale to Move.**  
53 Silverdale, Silver Falls, price negotiable, call Gary at 367-4074.

**For Rent**  
Woodland Place/Dale Haven Apartments, 1 - 2 bedroom apartments for rent, utilities and parking included, coin laundry, very clean and well maintained. Furnished, weekly and monthly rates also available, call after 6:00 p.m. 367-4922.

**Advertising**  
The Echo Classifieds \$5.50 for first 25 words 15¢ for each additional word. \$5.00 each per photograph. Fax: 367-9974. theecho@mts.net

**Public Notice**  
**Change of Meeting Date**  
**RURAL MUNICIPALITY OF ALEXANDER**  
THE Public is hereby advised of the following regular Council Meeting change date from...  
Tuesday, June 9<sup>th</sup>, 2009 at 10:00 a.m.  
To  
Wednesday, June 10<sup>th</sup>, 2009 at 10:00 a.m.  
Margaret Bonekamp, C.M.M.A.  
Chief Administrative Officer  
R.M. of Alexander

Sharon Mignon and Pamela, Perry, Paul and Preston Richardson

**Help Wanted**  
Professional Window cleaner needed, full time from April through November. Willing to train a motivated person. \$12.00 to \$15.00 per hour. Will consider fair commission for long term. Slight OCD an asset. Quiet Pines Window Cleaning 756-3868.

**HELP WANTED**  
Apply in person to Rapid Water Deli and Convenience, Place McDougall, St. Georges.

**Wanted to Rent**  
**Wanted to Rent**  
I want to rent a house or trailer in the Pine Falls, St. Georges or Great Falls area. 1-204-482-6171

**Public Notice**

## Business Classifieds

**ATV/Motor Cycles**  
**St. Croix Cycle**  
ALL TERRAIN MOTORCYCLES & POWER PRODUCTS  
Hwy. 11  
367-2219

**Computer/Networking**  
**GREAT WHYTE NORTH**  
COMPUTER SERVICES  
Jim Whyte  
204-367-2970  
www.greatwhytorth.ca

**Grocery**  
**Dancy's FOODS**  
THIRD STREET, LAC DU BONNET  
367-2221

**Automotive**  
**Custom Services**  
MB Heavy Equipment Safety Station  
345-6363  
cell: 345-3636

**Concrete/Excavating**  
**A.M.L.**  
AL MEISNER LTD  
-REDI-MIX CONCRETE  
-EXCAVATING  
-AGGREGATES  
345-8454

**Great Falls Foods**  
Highway 11, Great Falls  
367-2976  
OPEN 7 DAYS A WEEK  
Store Hours:  
Mon. - Thur. 8-6, Fri. - 8-7  
Sat. 9-7 Sun. 12-5  
Having a Social Function?  
Call us to look after everything for you  
Ask us about delivery  
**The House of Quality**

**powerfalls AUTO BODY**  
Phone 367-2577  
Fax 367-2336

**Hardware**  
**RONA HARDWARE**  
For all your Hardware Needs  
OPEN: Mon. to Sat. 9am to 6pm  
Pine Falls 367-2380

**Manitou Lodge**  
Mon.-Wed. 8am to 9pm  
Thurs. & Fri. 8am to 10pm  
Sat. 10am-10pm, Sun. Closed  
367-2252  
Tuesday Nite Wing Nite & Draft Special EVERY WEEKEND

**Bakery**  
**Sunrise Bakery**  
367-9019

**Financial**  
**Caisse**  
A better way to bank  
367-8268  
www.caisse.biz

**Hotel/Restaurant**  
**BIRCHWOOD MOTOR HOTEL**  
- 16 Modern Units  
- Hot tubs  
- Dining Room  
- Beverage Room  
- Meeting Rooms  
- Fully Licensed  
OPEN YEAR ROUND

**Building Supplies**  
**Osis Building Supplies**

**LIBERTY TAX SERVICE**  
Sandi Duval  
367-4244

**Hotel/Restaurant**  
**Papertown Motor Inn**  
367-2261  
Deluxe Jacuzzi Rooms  
Licensed Family Dining Room  
Banquet Facilities  
VLTs, Beer Store  
Hot tub  
Night Club  
1 Mile East of Pine Falls, Hwy. 304 & 11

**Catering**  
**RAPID WATER DELI**  
CONVENIENCE  
367-2460  
Mon. to Fri. 10 am - 5 pm - Sat. 10 am - 3 pm

**Furniture**  
**DAVE'S FURNITURE & APPLIANCES**  
367-2460  
21 1st Street, Powerview  
Mon. to Fri. 10 am - 5 pm - Sat. 10 am - 3 pm

**Broadlands Mall**  
Convenience Store/Gas  
Movie Rentals  
Open Daily 7 am - 11 pm  
367-4484

**Computer/Networking**  
**M&C Bruneau's PC SERVICES**  
345-6876

**Gift Shop**  
**Plum Creek Gift Shop**  
Closed Until April 11, 2009  
Phone: 756-3533

**CLARK'S CORNER**  
Tackle & Outdoors Store  
Live Bait  
Diesel Fuel  
756-8184

**Classified Advertising Works!!**  
**The Winnipeg River Echo**  
Box 40, St. Georges, Manitoba ROE 1V0  
Place McDougall, St. Georges  
email: theecho@mts.net  
Phone: 204-367-9468 • Fax: 204-367-9974

# Classifieds

**Hotel/Restaurant**  
**The Lakeview STEAKHOUSE**  
57 Park Avenue, Lac du Bonnet, Phone 345-8861  
Steak Dinner Specials  
CHINESE Available  
345-6294

**Medical/Dental**  
**Dr. Alan Grant - DENTIST**  
Fort Alexander Dental Clinic  
(in the Fort Alexander Health Centre)  
Tuesday, Wednesday, Thursday  
9:30am - 4:30pm  
Closed Mondays and Fridays  
Health Centre 367-2208  
Direct Line 367-4417

**Medical/Dental**  
**DR. ARNOLD ANDERSON**  
LAB ON SITE  
Optometrist  
Contact Lenses and Eyeglass Fittings  
MANITOU LODGE PINE FALLS  
367-2390  
Monday - Friday 9:00 a.m. - 12:30 p.m.  
1:30 p.m. - 5:00 p.m.  
Closed Lunch Hour  
Examinations done on Tuesdays

**Memorials**  
**STEWARTS MEMORIALS**  
Lac du Bonnet  
345-2644

**Printing**  
**For All Your Printing Needs**  
• Social Tickets  
• Raffle Tickets  
• Business Forms  
• Wedding Invitations  
• Envelopes  
• Letterhead  
• Cheques  
**Echo**  
Box 40, St. Georges, Manitoba ROE 1V0  
Place McDougall, St. Georges  
email: theecho@mts.net  
Phone: 204-367-9468 • Fax: 204-367-9974

**Manitou Lodge**  
Mon.-Wed. 8am to 9pm  
Thurs. & Fri. 8am to 10pm  
Sat. 10am-10pm, Sun. Closed  
367-2252  
Tuesday Nite Wing Nite & Draft Special EVERY WEEKEND

**DR. ARNOLD ANDERSON**  
LAB ON SITE  
Optometrist  
Contact Lenses and Eyeglass Fittings  
MANITOU LODGE PINE FALLS  
367-2390  
Monday - Friday 9:00 a.m. - 12:30 p.m.  
1:30 p.m. - 5:00 p.m.  
Closed Lunch Hour  
Examinations done on Tuesdays

**Blue Water Physiotherapy**  
Phone: 367-2537  
Please call for an Appointment  
•Work and Sports Injuries  
•Neck and Back Pain  
•Acupuncture  
•Orthotics  
•Manual Therapy  
Located on Highway #11 in Powerview  
Celeste Basson  
B SCPT, CAPCI

**Painter**  
**Dan's Painting**  
Serving Winnipeg River area  
FREE ESTIMATES  
204-572-8282

**Papertown Motor Inn**  
367-2261  
Deluxe Jacuzzi Rooms  
Licensed Family Dining Room  
Banquet Facilities  
VLTs, Beer Store  
Hot tub  
Night Club  
1 Mile East of Pine Falls, Hwy. 304 & 11

**Bluewater District Transit**  
For Bookings Call  
367-9128 Office  
345-3075 Driver

**Powerview/Pine Falls Dental Centre**  
277A Main Street, Powerview  
Hwy. 11 - Municipal Building  
Monday - Friday 9:30 a.m. to 4:30 p.m.  
Dr. Mark Karpa  
Dr. David Kindrat  
Dr. Drew Dear  
Dr. Danny Bae  
Emergency Care  
New patients welcome  
367-2815

**Pawn Shop**  
**CASH IN A FLASH PAWN**  
Located on the corner of  
Art Ave. and Hwy. 11  
in Powerview  
367-4537

**PINE FALLS SERVICE CENTRE**  
Monday to Saturday  
8:00 a.m. to 12:00 midnight  
Sunday 8:00 a.m. to 12:00 midnight  
367-8803

**For the Best Rates for Long-term Advertising**  
**The Echo Business Directory**  
367-9468

**Pharmacy**  
**TRY YOUR DRUGSTORE first**  
**PINE PHARMACY**  
Open Monday to Saturday  
9:30 a.m. to 5:30 p.m.  
367-2611  
DISPENSARY  
367-2517

**Pharmacy**  
**TRY YOUR DRUGSTORE first**  
**PINE PHARMACY**  
Open Monday to Saturday  
9:30 a.m. to 5:30 p.m.  
367-2611  
DISPENSARY  
367-2517

**Insulation**  
**O'HANLEY INSULATORS**  
Blow in Cellulose Insulation  
Free Estimate Messages  
Call Charles 367-4411  
367-1578 Cell: 266-9193  
ohanley-insulators@hotmail.com

**Esser Chiropractic Health Centre**  
Corner of PTH 11 and Church Street (beside Papineau Motors)  
• Autopac  
• Blue Cross  
• Veteran's Affairs  
• Worker's Compensation  
Phone 367-4858  
No referral required Please call for appointment

**Pharmacy**  
**TRY YOUR DRUGSTORE first**  
**PINE PHARMACY**  
Open Monday to Saturday  
9:30 a.m. to 5:30 p.m.  
367-2611  
DISPENSARY  
367-2517

**Insurance**  
**POWerview AGENCIES**  
367-4455  
8 of the co-operatives autopac

**Jon. O. Phillips, RMT**  
Registered Massage Therapist (MTAM)  
CLINIC LOCATIONS:  
Through the Arbour 188 Pine Street, Pine Falls (204) 367-2141  
Revitalize Soul Spa 225 Clarendon Ave., Selkirk (204) 785-8922  
Direct billing available to Blue Cross & Great West Life

**Pharmacy**  
**TRY YOUR DRUGSTORE first**  
**PINE PHARMACY**  
Open Monday to Saturday  
9:30 a.m. to 5:30 p.m.  
367-2611  
DISPENSARY  
367-2517

**Your Ad Here**

**For All your Real Estate Needs!**  
**CONTACT**  
Our Real Estate Professionals Look forward to Working with You!  
Call 1-800-854-8148  
345-2121 / 268-2011  
Email c2lsun@mts.net  
www.century21suncountry.com

**Windows**  
**WANTED 8 HOMES THAT NEED NEW WINDOWS**  
Eight (8) homeowners in this area will be given the opportunity of having Climate Shield Premium Windows installed on their homes at a very reasonable cost.  
Your home can be a showplace in your neighbourhood and we will make it worth your while if we can use your home as one of our model showhomes.  
Ask about low monthly payments through Hydro  
For an appointment call Mr. Bennett at  
NISBY WINDOW & DOOR  
1-800-582-5488  
www.nisby.mb.ca

**TRY YOUR  
DRUGSTORE**

*first*

- *Pharmaceuticals*
- *First Aid Supplies*
- *Hair Products*
- *Health & Beauty*
- *Stationary*
- *Greeting Cards*
- *Lottery Centre*
- *Gifts*



*Pick up Your  
Sunscreen for your  
work in the garden!*



**PINE  
PHARMACY**

530 p.m.

**DISPENSARY**

**367-2517**