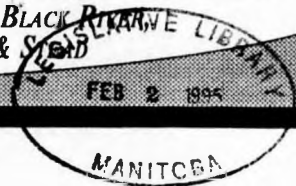


# The COMMUNITY VOICE

SERVING: THE BEACHES, BISSETT, GREAT FALLS, HOLLOW WATER, LITTLE BLACK RIVER, MANIGOTAGAN, PINE FALLS, POWerview, SAGKEENG, SAINT GEORGES & ST. B

200 Vaughan St. 15995  
Winnipeg, Mb.  
R3C 1T5  
Att. Serials Dept.



## Drama on the MacIntosh Trail

### Snowmobiler seriously injured

Jim Hladki of Lac du Bonnet is in serious, but stable, condition in intensive care in the Winnipeg Health Sciences Centre following an accident on the MacIntosh power toboggan trail early Sunday morning.

Hladki had met up with two friends from Lac du Bonnet in Powerview in the early hours of Sunday, January 29. They decided to return to Lac du Bonnet together. With Derek Erickson in the lead, and Peter Shura at the rear, the three left for Lac du Bonnet sometime after 3:00 pm. By 3:30 they were close to Catfish creek, about eight miles South of Powerview. Erickson noticed there was no light behind him and turned around. Shura said "I was following about three minutes behind and got there first." He said he didn't know how the accident had happened but Hladki had somehow lost control of his machine and sideswiped a tree. "He took more punishment than his toboggan did," Shura said. He said Hladki was unconscious, and having difficulty breathing. His helmet was off, and his neck was twisted at an awkward angle.

Neither of the two friends had any first aid training, and were afraid to move him because of a possible neck injury. However, they straightened his head and Shura pressed on his stomach, there was a gurgling sound and apparently Hladki's air passages were cleared enough for his breathing to return to some semblance of normality. Shura and Erickson removed their coats and wrapped them

around the victim. Erickson stayed on the scene, and Shura, now wearing a long sleeved tee shirt, left for The Pine Falls Hospital to get help. "It must have been cold but it felt pretty warm to me." He said.

Shura said the eight mile journey, "Seemed to take hours, but I know what my machine can do. It probably took minutes." All the way he was conscious of the need to keep from getting hurt himself, leaving Hladki and Erickson in the bush waiting vainly for help.

Close to Pine Falls he met Grant Henderson and Kevin Alarie, both of Pine Falls. Henderson, who has some ambulance experience, went back to the scene of the accident, not knowing that Erickson was there. By the time Henderson arrived, Hladki had regained consciousness. Alarie went with Shura to the closest phone, at the Papertown in Powerview, where they called the ambulance and RCMP. In the meantime Henderson had travelled to Gilbert Papineau's farm on Milner Ridge Road and telephoned the ambulance to let them know the type of equipment they would need.

The Pine Falls ambulance arrived fairly quickly. Shura took ambulance attendant Mandy Dankowski to Hladki, and the RCMP followed later with a rescue sled. (To Shura it was a long wait. He said if the ambulance had a sled Hladki could have been at the hospital much sooner.)

Hladki was rolled onto the sled, (a steel body case on a plastic half-tube) and strapped in tightly so that he

could not move. Then followed a painfully slow and careful eight miles to the Pine Falls Hospital. By the time he arrived at the hospital Hladki had been in the bush for about three hours, and was beginning to get very cold. He was treated in the Pine Falls hospital and later transferred to the Winnipeg Health Sciences Centre.

Shura said Hladki had suffered a cracked vertebrae in the neck, a broken collar bone, cracked ribs and a col-

lapsed lung. He said he was originally listed in stable condition, but suffered a relapse Monday evening and had trouble breathing. Tuesday evening, the Nursing Supervisor of the Surgical Intensive Care Unit told the Community Voice that Hladki was in serious, but stable, condition.

It is not clear why it took so long to get the rescue sled to Hladki, but Shura says that the Lac du Bonnet power toboggan club is planning to put one in each of its' shacks, (one

every 20 miles or so), and they will be putting notices in each of their shacks listing emergency phone numbers and giving advice on emergency procedures. Shura said ambulances should also have a rescue sled available. "We are planning to do that in Lac du Bonnet." He said.

Shura said he would like to thank personally the two Pine Falls snowmobilers who helped with the rescue. "They were really good." He said. "We were really grateful for their help."

## Hydro prepares for dam or dyke failure

Manitoba Hydro has identified a series of "worst case" scenarios resulting from possible failure of a dam or dyke on the Winnipeg River. They are in the process of developing emergency plans to deal with a failure.

For the McArthur, Great Falls and Pine Falls generating stations the worst case identified by Hydro would be if the Centre Dyke at McArthur Falls was "overtopped" and breached.

Parts of PTH 11 would be flooded. The marsh area West of PTH 11 would be flooded, with these floodwaters escaping overland and re-entering the Winnipeg River immediately west of Fort Alexander. The West Dyke at Great Falls would be overtopped. Flooding of residences would occur in Great Falls, near Robertsons Point, in Silver Falls, in St. Georges, and in parts of Pine Falls.

In the event of a dyke failure at the Great Falls Generating station flooding would be more limited, but some ar-

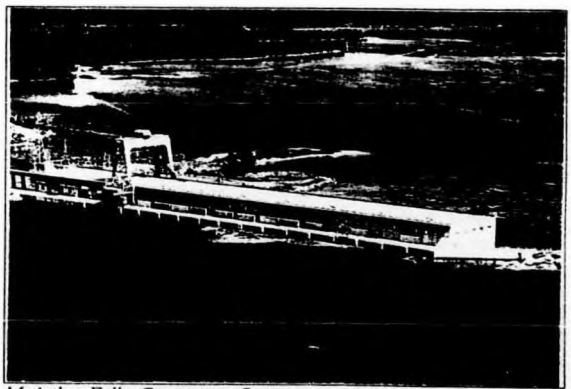
reas of St. Georges and Powerview would be flooded.

Any failure at the Pine Falls Generating Station would not result in flooding in any of the communities downstream, all floodwaters would be contained within the banks of the Winnipeg River.

In a series of booklets on each of the dams on the river, Hydro have published maps of areas likely to be affected, and the depth of any floodwater. All dams on the Winnipeg River are in excellent condi-

tion, and any actual dam failure is extremely unlikely. Dykes are inspected regularly and repaired immediately if necessary. (Hydro's worst problem is from riverside residences or cottagers punching a hole through the dyke at a water supply intake.)

Booklets are available from Hydro offices and maps can be viewed at hydro or local municipal offices. Hydro is planning to involve local communities in the preparation and implementation of emergency plans.



McArthur Falls Generating Station

News



New Northern Manager in Pine Falls

The Northern Store in Pine Falls has a new manager. 21 year veteran of the Hudsons Bay Company Northern Stores, (1971 to 1992) and subsequently the North West Company, Kirk

Coates, took over management of the store last Friday, January 27. Kirk has spent the last two years in the Winnipeg Head Office of the company. His Northern Store experience

includes Norway House, Snow Lake, and La Ronge, Saskatchewan.

Kirk said he is happy to be here and looks forward to being able to serve the communities in the area.

Police Report

Jan. 13th, Powerview R.C.M.P. were advised of the theft of a 1986 black Monte Carlo from the Pine Falls Mill parking lot. This vehicle was located in Winnipeg. Police also located a stolen Van from Winnipeg and it is felt that both vehicle thefts are related.

On Jan. 14th, a male was arrested and charged after a report was received that the Hollow Water School had

been broken into.

Police were advised of the theft of a car from the Paper Town parking lot. This vehicle was later located on the North Shore Road and it had been burnt. The owner of the vehicle has since been charged with Mischievous as the report of theft was found to be false.

A male subject was arrested Jan. 15th after being observed riding a bike on Art

Street in Powerview. The man could not advise police were he had obtained the bike and that he did not own it. The owner of this item was located.

Police are investigating a Jan. 19th break and enter in Pine Falls and the theft of a VCR from the residence.

On Jan. 20th, there was a report of a garage entered, lock stolen, gas cap off a water truck and unknown amount of gas stolen. A witness saw 2 males walking out of the yard.

On Jan. 21st, there was a complaint of a house being broken into and articles stolen. The door was kicked in.

Hockey equipment and a hockey bag was reported stolen from the Sagkeeng arena Jan. 22nd.

There was a complaint of someone stealing a STIHL chainsaw from the porch of a residence on the North Shore.

Jan. 24th, there was a report of a break and enter in the Dufour Trailer Court. A VCR was stolen.

There was a complaint Jan. 25th, of two break and enters at two separate residences on the Rock. Many items were stolen. A VCR, Sega Game and a Ghetto Blaster was stolen from one of the residence.

Community Billboard - ph 367-4466

**LIBRARY ALLARD:** Library Hours: Tuesday: 10:30am to 5:00pm Wednesday: 1:00pm to 5:00pm 6:30pm to 8:00pm Thursday: 1:00pm to 5:00pm 6:30pm to 8:00pm Friday: 1:00pm to 5:00pm Saturday: 10:30am to 2:00pm  
**THREE BEARS DAYCARE:** Meetings first Thursday of every month  
**KNIGHTS OF COLUMBUS:** Meetings every second Tuesday of the month 7:30 at St. Theresa's Church General Meeting  
**SILVER HAVEN CLUB:** Cribbage - every 4th and 5th Monday of the Month at 1:30 p.m. - Whist - every Thursday of the month at 1:30 p.m.  
**WINNIPEG RIVER W.L.:** meetings third Tuesday of every month, 7:00 p.m. Library Allard, St. Georges  
**POWVIEW LOCAL MMF:** Regular Meetings held on the first Thursday of each month - 7:00 pm at the Powerview Arena Meeting Room  
**LIONS CLUB:** Paper Recycling Pick-Up The last Wednesday of the month  
**PINE FALLS HEALTH AUXILIARY:** Meetings on the first Tuesday of Every month at 1:30 pm Starting Sept. 6th  
**GAMBLERS ANONYMOUS:** Meetings Sunday at 8:00 pm at Pine Falls Anglican Church, commencing Jan. 1, 1995. For Information, call 367-2686.  
**COTTAGE COUNTRY BUSINESS ASSOC.:** Meeting - Every first Monday of the month at 7:00 p.m. Ph. 756-2596  
**ALCOHOLICS ANONYMOUS:** Sun Rise Group - Meetings every Monday, Wednesday and Friday 7:30 p.m. to 8:30 p.m. Located at Powerview Arena (small centre entrance in front)  
**CROSS CULTURAL HEALING CIRCLE WORKSHOP:** will take place at the Sagkeeng Arena Multiplex on Saturday February 4th, at 9:00 A.M. Bring a bag lunch to this all day event. All segments of the population are invited to attend.  
**PINE FALLS LEGION:** Meetings held 2nd Thursday of the month 7:30 p.m. Legion Hall. Bingo held Wed. nights at Legion Hall. Doors open at 7 p.m. & Bingo starts at 8 p.m. Meat raffles held at Legion House on Fridays from 4:30 to 5:30 p.m.  
**PINE FALLS MASONIC LODGE # 154:** meets on second Friday of every month in the Pine Falls United Church. (except June, July, & Aug.)

Church Services

**NOTRE DAME DU LAUS:** Saturday Evenings: (French Mass) 7:30 pm - Powerview Sunday: (English Mass) 10:00 am - Powerview 12:00 noon - Stead  
**PINE FALLS UNITED CHURCH:** Sunday service Sunday school 11 A.M. Rev. Jerry Towne. Office Hours: Tues - Fri. 10:00 to Noon Tel: 367-2633  
**PINE FALLS ANGLICAN CHURCH OF ADVENT:** 2 Holly St. Ph. 367-8347 Service Sunday 9:00 am. Sunday School provided Rec. The Rev. Joan Mitchell Ass't. Curate Rev. Stephen Mitchell. Everyone Welcome  
**ST. THERESA'S:** Pine Falls Mass Sunday at 10:00 am  
**ST. GEORGES:** Mass Sunday at 8:00 am and 10:00 am  
**ST. JUDE'S ANGLICAN CHURCH, Grand Marais, Holy Eucharist** - 2nd and 4th Sundays. 11 a.m. Morning prayer 11 a.m. - 1st, 3rd and 5th Sundays.  
**TRINITY EVANGELICAL LUTHERAN CHURCH, Thalberg, 1 mi. east and 1 mi. South of junction 12 and 304. St. John's Evangelical Lutheran Church, Greenwald on Hwy. 12, 1 1/2 mi. north of junction with 317. Sunday church school 10 a.m., worship 11 a.m. (alternate locations). For info, call 635-2625 or 754-8682.  
**CHRISTIAN FAITH FELLOWSHIP - Sunday service - 10:00 a.m. Bible study Wed. night 7:00 p.m.**  
**HOUSE OF PRAYER FULL GOSPEL - 2:30 every Sunday. Scantebury Mb., on Hwy. 59****

**The COMMUNITY VOICE**  
 Community Newspaper Est. 1993

**Publisher:** Don Norman  
**Editor:** Charles Norman  
**Advertising Office Mgr.:** Gloria LaFreniere  
**Contributors:** Charles Norman - Lorraine Neal  
**Production Staff:** Don Norman, Charles Norman

**SUBSCRIPTIONS**  
 \$22.80 within 65 km. (40 mile) radius of Pine Falls.  
 \$ 45.60 all other areas  
 (prices include PST & GST)  
**The COMMUNITY VOICE**  
 P.O. Box 4000  
 Pine Falls Mb.  
 ROE 1M0  
**PH. 367-4466 FAX 367-4078**  
 2nd class mail #02315408-99 (Postage paid in Pine Falls)

Comment

It is rather disconcerting that the issue of year round policing for the Beaches keeps rearing its ugly head every two years. One has to wonder who is the thrust behind this newest attempt to push full time year round policing at the beleaguered taxpayers of Ward One of the L.G.D. of Alexander.

The person(s) who continue to pressure governments to call for unnecessary referendums, should bear the full cost of any proposed referendums. This issue has been dealt with several times in the past. The latest with a costly referendum on July 31, 1993 which resulted in the question being defeated. The following numbers show the results:

For Municipal Year Round Policing 110  
 Against Municipal Year Round Policing 859  
 The taxpayers of Ward One would bear the whole cost of such an undertaking as a special levy on property owners. The cost would not be borne by the entire district as is now the case with the summer constable. Think about this carefully taxpayers of Ward One.....how many expendable tax dollars do you have? Be careful what you ask for, for you may get it.

News

Funding to assist marketing of LaVerendrye Trail region

Funding from the Canada-Manitoba Tourism Agreement will be used for the development and promotion of the La Verendrye Trail region of eastern Manitoba to lure more tourists to the area.

The agreement will provide the La Verendrye Trail Association Inc. with \$10,000 in assistance for a three-year campaign for the region. The campaign, costing a total of \$40,000, will include development and distribution of a promotional brochure and video, participation at travel trade shows and advertising in Manitoba, Saskatchewan, Ontario and the north-central U.S.

"This is a very picturesque region of our province which offers a wide variety of recreational opportunities", said Industry, Trade and Tourism Minister James Downey. "There are numerous first-rate resorts, spectacular camping facilities, scenic forests and

world-famous beaches. The area's already a very popular four-seasons playground, whether you're a hunting and fishing enthusiast, wildlife watcher, snowmobiler or a cross-country skier".

The trail will follow Henderson Highway from the Perimeter Highway north through East Selkirk to Highway 59, north to the beaches, south on Highway 11 to Seven Sisters and Pinawa, east through Whiteshell Provincial Park on PR 307 and Highway 44 to West Hawk Lake and Falcon Lake on the Trans-Canada Highway.

The La Verendrye Trail Association Inc. was incorporated in July 1994 as a consortium of community organizations and local businesses with a mandate to market the region as a tourist destination. The association has also received support from a number of area municipalities, busi-

nesses and local government districts.

"This region represents immense potential for growth", Downey said. "This campaign will help bring more people to Manitoba which means more jobs and a stronger economy for all Manitobans. Through promotional efforts like this, Manitoba will double the size of its tourism industry by the year 2000".

The Canada-Manitoba Tourism Agreement, a cost-shared five-year initiative between the governments of Canada and Manitoba, is aimed at enhancing the competitiveness, growth and excellence of the province's tourism industry. Financial assistance for marketing programs is being provided through the Provincial Marketing Initiatives Program, an agreement program funded by the Manitoba government.

Pine Falls Health Complex honors Past and Departing Board Members

By Lorraine Neal

Presentations by Chairperson Ken Cowie were made at a dinner on Wednesday, January 25, 1995, to retiring and past Board members. The presentations followed the regular Board Meeting of the Pine Falls Health Complex. Presented with the gift of a beautiful Cross pen in recognition of many collective years of service were Gerald Courchene, Wayne Fontaine, and George Harbottle.

"The participation and input of hospital Board members is invaluable. The Pine Falls Health Complex appreciates the time and effort expended by each member, and it has been a pleasure to work with each and every one of you," said Chairperson Ken Cowie as he made the presentations.

Mysak, Lucy Fontaine, Frank Thibedeau, Diane Dube, Henry Hardisty, Furlon Barker, Adolphus Bushie, Warren Bird and Dr. Siddall. Presentations will be made to future departing Board members and those unable to attend the January dinner, at the Volunteer Appreciation Day which is scheduled for May. Volunteer Appreciation Day will become an annual event held to honor those people who consistently assist in the smooth running of Hospital and Personal Care Home services and events.

Need Financing ?

Bruce Burton is our representative for your area. To discuss your business financing needs please call collect to arrange an appointment at (204)983-7900 or fax us at (204)983-0870

**SFB**  
 1100-155 Carlton Street  
 Winnipeg, MB  
 R3C 3H8  
 La Banque offre ses services dans les deux langues officielles

Powerview School News

Student reports will be February 3rd for Grades 9 to 12. School will be closed Feb. 17th.

Magazine Sales!

Have the various magazine companies been sending you reminders that your subscriptions are running out or have you been getting the friendly renewal forms? Please wait to renew or to order new magazine subscriptions for our annual magazine fund-raising drive. The next campaign, which is run by the Advisory Committee, will begin early in 1995.

Thank You To

Grade Five students that voluntarily helped clean up the school sidewalks: Paul Bonekamp, Norman Lecoy, Jon Hermtier, David Friesen, George Canard, Kevin Clarke and Mark Boyer. They were excellent helpers!

Agassiz Gradates Grade Point Averages For 1992/93

Results received indicate that Agassiz students again

exceeded the provincial averages for the students entering Manitoba Universities in 1992. The results are as follows:

- Provincial Average: Grade 12 G.P.A. 3.08
- Agassiz Average Grade 12 G.P.A. 3.29
- Provincial Average: 1st Year University G.P.A. 2.28
- Agassiz Average 1st Year University G.P.A. 2.65

School Jackets For Sale

The Student Council is taking orders for spring jackets early this year to beat hold-ups. They are 100% cotton, black denim with blue writing and are about mid-thigh length. They are starter-style jackets and include a hood and elasticized cuffs. They are \$47.00 (taxes included). If you would like to order one call Chantelle Lafreniere at Powerview School at 367-2296.

Library Lines

The Library has been busy as usual during this month. Mr. Kelsch's grade 7 class is working on a Resource

Based Learning unit called "Survival." The students, victims of an airplane crash, have been strewn throughout the world and are conducting extensive research on the country they have found themselves in. The only information they started off with is just a map coordinates and they were given basic supplies including a Swiss army knife \$10.00 Canadian, appropriate wearing apparel, three days worth of minimal rations, one book of matches and a load of relevant books and reference materials. The students, working in groups must find their way back home to Powerview, but in order to do that they must learn about all aspects of the country to survive.

Two students in Mrs. Sheane's class have been working over the last while on a unit on bats. Andrea Bull and Jonathon Anderson have completed their research and will present their finding to their class. Did you know that there are bats as small as bumblebees? And did you know that some bats eat fish? Ask Andrea or Jonathon; they'll tell you all about them.

And the winner is...  
**"Dynamic Mutual Funds. Top Fund Company Of The Year."**  
 RILEY MOYNE & DUFF YOUNG AUTHORS OF "TOP FUNDS" 1995

**THE MONEY EXPERTS**  
**TOP FUNDS 1995**

"Our choice for Fund company of the Year is that mutual fund organization that has had the highest number of funds identified by our research as being top funds. This year's honour goes to Dynamic, which placed six funds on our list."  
**DYNAMIC MUTUAL FUNDS**

The first 25 people to register for a free financial consultation and mention this ad will receive a copy of Top Funds 1995, call:

Len Marx or Jake Cadigal  
 PFSI Investments Canada Ltd  
 call Toll-Free  
 1-800-861-8801

Unit value and investment return will fluctuate. Important information is contained in the fund's simplified prospectus. Please obtain a copy from your financial advisor and read it carefully before investing.

## Police

### PINE FALLS AND DISTRICT CHRISTMAS HAMPER COMMITTEE

1994 FINANCIAL REPORT

Balance forward Dec. 31/1993	\$2131.90
Revenues:	
Donations	2143.86
Bank Interest	4.73
	2148.59
	4280.49
Expenses:	
Bank Charges	50
Supplies	1462.57
	1463.07
Balance at Jan. 1/1995	\$2817.42

We would like to thank everyone who contributed in any way to make this year's Hamper Fund Drive a success. The local businesses were not canvassed this year due to our surplus, we would like to thank the following for their assistance and co-operation:

All Individuals	Church of the Advent
Clark's Corner	Coronation Rebekah Lodge
Great Falls and District Rec. Assoc.	Midway Foods
Great Falls Women's Institute	Northern
Pedden's Convenience Store	Pine Falls School Staff
Pine Falls Service Centre	Powerview School
Powerview MMF Bingo Fund	Riverview Self Serve
Winnipeg River Women's Institute	Royal Canadian Legion

We apologize if we missed anyone.

## Rural crime watch

For the next several weeks, the Community Voice will be publishing a Rural Crime Watch tip.

The topic this week is "Knowing When to Call the Police."

Calling the police is always a good idea when you want to get involved in crime prevention. But sometimes calling the police or other authorities is more than a good idea - it's a must.

Surprisingly, many people hesitate to call the police out of fear of getting involved, or of being identified, or even out of fear of sounding silly or over-suspicious.

But the police need and want your help in preventing crime. What Happens to Me When I Call the Police?

Naturally, the police need to know as much as possible when they deal with actual or suspected criminal activity.

When you call, the police operator will take as much information as is required to be able to send police to deal with the situation. But more information may be needed later, or facts may need to be checked out, so always leave your name and telephone number with the police. You can still remain anonymous. This means that your name will not be made known to anyone. Neither the victim nor the suspect that you have reported on will know who called the police. Simply tell the person to whom you are reporting that you wish to remain anonymous and your privacy will be respected.

When You're Not Sure Whom to Call:

In some cases, the police might not be the first people to call when you are reporting an incident, but if you're not sure whom to call, it's always right to call the police. They will be able to deal with the problem or tell you who can.

Example 1

You see someone shoplifting. Note as many details as possible and tell store personnel. It is up to them to deal with the matter. You pay inflated prices because of shoplifting, help do something about it.

Example 2

You strongly suspect that a child is subject to neglect, or to physical or sexual abuse. Although you might not feel you have proof, you have the obligation to report your concerns to the appropriate authorities.

Most city telephone directories list on the front page the number to call when you suspect or witness child abuse. If not, call the local Children's Aid Society or other child welfare authority. If you're not sure whom to call, call the police. They will ensure that your concern is properly dealt with.

Tips to Remember When You Call the Police

1. Stay calm and concentrate on relating those details that will be most helpful to the police.

2. Let the police operator control the conversation. He or she will likely be filling out a form and

will need the information in a certain order to be able to dispatch police help as quickly as possible.

3. Tell the operator the number of the telephone you are calling from.

4. Stay on the line until the police arrive or until the operator tells you to hang up.

Write it Down

Whether you are reporting an emergency or a suspected criminal activity you have observed over a period of time, write down any details such as the time of occurrence, license numbers, or descriptions of people and voices. This applies to everything from nuisance telephone calls to suspicious salesmen and charity solicitations to vandalism. Your notes may help to prevent harm to a person or loss of property, and aid police in apprehending a criminal.

Part of being a good neighbor is knowing what to do and when to do it. Citizens can do a great deal to prevent crime, and sometimes the best thing for us to do is simply to call our professional partners, the police.

## Technology

# Computers

by Doug Donahue

## Operating Systems: DOS or Windows?



Ask a computer user what operating system they prefer, and the replies will be surprising. There are those that live and breathe by the DOS C> command line. Then, there are those that have little use for DOS, and prefer to work in the Microsoft Windows environment.

DOS (an acronym for Disk Operating System) can trace its roots back to 1981, the year that IBM chose a small upstart Washington state company named Microsoft to supply an operating system for the new IBM PC.

For the record, Microsoft was formed by Bill Gates and Paul Allen in 1975. Their first product was a version of the Basic programming language ported to the microcomputer platform.

DOS is merely a group of commands that instruct the computer and its peripherals to perform certain functions. It is usually loaded into the computer's main memory when the system is first started. But, as the memory of a computer is dependant on the electrical power of the computer to retain its contents, when you shut off the computer, you also lose your computer's memory. So, when you turn the computer back on, you must also load DOS again.

The versions of DOS have made significant progress over the years. The latest version of MS-DOS (Microsoft DOS) is version 6.22, and it is a stable, user friendly system. There is a built-in help feature that will assist the user in determining which command syntax to use. Gone are the days of having the DOS users manual open on your desktop for constant reference. Although others may argue the point,

DOS actually has become user friendly.

For those that loath the thought of typing in DOS commands, the alternative is the Windows operating environment. Windows is a product of the Microsoft Corporation. But, rest assured, Windows is about as friendly an operating system as you can get in the world of IBM compatible computers.

The concept of Windows is that rather than typing in 'cryptic' DOS commands, you simply point to the appropriate icon, click on that icon, and the command is carried out for you. For those purists that absolutely MUST enter commands from a DOS prompt, Windows has an icon named MSDOS that, when invoked, allows the use of DOS commands at the command prompt. This is a welcome option for some of us users that feel that we can perform certain functions faster (and better) in the DOS environment.

One of the best aspects of Microsoft Windows is that a user who is basically unfamiliar with computers can become productive very quickly, as opposed to attempting to teach the new user from the DOS environment. There is something reassuring about knowing that when you click on an icon, you will always get the same results. Take away the fear aspect of computing ('... I was afraid I was going to break something...'), and the user will learn at a more rapid rate.

One item to remember is that Windows is not an operating system in the truest sense of the word. Windows actually operates 'on top of DOS', in that DOS must first be loaded before Windows can be loaded. But, the user who operates in Windows exclu-

sively would never know that DOS is running under Windows.

As almost every computer sold these days comes with Windows already installed, the user is ready to get right into the Windows environment. For those that wish to upgrade their operating system to Windows (the current version is Windows 3.1), the installing of Windows is a seamless operation. Microsoft gets full marks for writing easy to use installation routines. Even the most novice of users should be able to install Windows with nothing more than the user manual for reference.

There have been various 'pretenders to the throne' for the operating system of choice. Digital Research (which has subsequently been bought out by Novell) has a product called DR-DOS, which was marginally successful. Digital Research also had a graphical user interface called GEM, which never caught on with users, but has been used by a few software manufacturers for their products. Another product named GEOS (which was originally created for use on the Commodore 64) made a stab at knocking off Windows, but once again, the champion won.

I hope you can tell that I am a proponent of Microsoft Windows. Although bashing Microsoft and Windows has become the 'thing to do' in some computing circles, I think that it is just 'sour grapes'. I have had no troubles using Windows in a work environment, both on stand-alone and networked PC's. The casual user should experience no troubles at all.

Please stay tuned to this column for hints, tips, reviews, etc.

## VICTORIA BEACH SNOWDRIFTERS ANNUAL POKER DERBY



Sat. Feb. 11/95  
Registration 10:00 am - 4:00 pm  
Starts at Birchwood Hotel  
\$5/Hand

For more information call  
Tracey 657-8755 or Wayne 756-8090

## Northern

Customer Service is Our First Priority  
Hwy. 11, Fort Alexander, MB 367-9215  
\*Gas \*Post Office  
\*Groceries \*Produce  
\*Video Rentals \*Meat

**KFC** OUTLET LINE 367-4097

HOURS OPEN 7 DAYS  
Mon. to Sat. - 9:30 a.m. - 9:30 p.m. Sunday - 1 p.m. - 9 p.m.

## FORT ALEXANDER FURNITURE STORE

Major Appliances \* Electronics  
and Team Sports  
Located in the Sagkeeng Multi-Plex Arena  
HOURS: 10 a.m. - 6 p.m. Tuesday to Saturday

## How to Retire Richer

# ROYAL BANK

Pine Falls Branch

## MUTUAL FUNDS & RSP SEMINAR

invites you to attend  
WED. FEB 15, 1995  
7:00 p.m.  
PAPERTOWN MOTOR HOTEL

Please RSVP  
Call 367-2213

Limited Seating

## The Lakeview

Dinners include salad bar, choice of potato or rice, and coffee

OPEN: Wednesday to Saturday 5:30 - 9:30 p.m.  
Prices do not include taxes or tip. Please consult our regular menu for additional items.

Steaks	
T-BONE 16 oz. prime beef	13.50
RIBEYE 12 oz. choice cut	14.25
NEW YORK STRIPLOIN 8 oz. king of the steaks	11.95
TENDERLOIN FILET 6 oz. melt in your mouth	11.95
Seafood	
BRILLED SHRIMP 9 large shrimp broiled on skewers with peppers & mushrooms	11.95
BREADED SHRIMP Half pound of smaller breaded shrimp cocktail sauce	8.75
KING CRABLEGS Seafood lovers - enjoy yourselves	Market Price
Chicken & Ribs	
CHICKEN BREAST Whole boneless breasts in special marinade with bar-b-q sauces	10.25
CHICKEN & RIBS Chicken breast with jr. ribs	11.50
BAR-B-Q RIBS Full rack of pork backribs	12.25
JR. RIBS 1/2 order of backribs	10.50
Combos	
SHRIMP SKEWERS 3.95	CHICKEN BREAST 3.50
BAR-B-Q RIBS 7.95	SAUTEED MUSHROOMS 2.95
KING CRABLEGS Market Price	BREADED SHRIMP 2.50
SALAD BAR 4.95	

**Weekend Special**

**Prime Rib**

Wednesdays: TWO for THREE, 5:00 - 7:00 p.m.

**Birthday & Anniversary Cakes Available**

**Wednesdays: SENIORS DISCOUNT: 20% off food after 5:00 p.m.**

Have you heard about the

# BIG 5

on the 14th

## PINE FALLS SERVICE CENTRE



# Sports

## Eastman Sport Report

(week of January 30)

The Eastman Sports Report appears here with the co-operation of your local community newspaper in partnership with Eastman Sport Development Association. **Eastman Winter Games 1995**

The 1995 version of the Eastman Regional Winter Games is under way.

The Games officially kicked off with a Host Night, held on January 19 at Mitchell. The night was made possible through the sponsorship of CHSM Radio 1250 of Steinbach.

ESDA Chairperson Chrissy Viznaugh gave the opening remarks and presented Clayton Dreger of CHSM with a certificate in recognition of the radio station's commitment to amateur sport in Eastman and their continuing sponsorship of ESDA activities.

Tim Fergus brought greetings from the Sport Directorate of the Province of Manitoba. Following introduction of other special guests, ESDA Winter Games Chairperson called upon the Hosts present to give a brief run-down of their event and gave them their host grants.

Wayne Rudd, Eastman rep. on the Manitoba Games Council wrapped up the evening with a report on the 1996 Summer Games and a special presentation to Bob Rondeau for his continued efforts in the amateur sport of Eastman.

At press time, Figure Skating, Volleyball, Special Olympic Bowling and Bantam Curling will have been completed. Watch this space for results in the near future. However, these events are still

to come in the Games:  
 a) **Badminton** will be held on February 25 at Grunthal. Richard Boivert (434-6220 or 434-6116) is the Host Chairperson. Alex Walton is the Technical Advisor. Registration fee is \$10 per person. All ages welcome.

b) **Basketball** is being hosted in Lac du Bonnet. Bob Becker (345-6535) is the Technical Advisor and Host. The date is February 25, with a \$75 per team fee. Category is 18 and over male.

c) **5-Pin Bowling** will take place February 5 at Steinbach's Deluxe Bowling Alley. Fee is \$6 per person. Viera Jakubek (326-3932) is your host and technical advisor. Teams are to be made up of a youth, adult and senior.

d) **Bison (Under 17) Curling** occurs March 18-19 at Tyndall Curling Club. Lydia Ewasko (268-2261) is the host, with a registration fee of \$40 per team. Bob Rondeau is the Technical Advisor. Teams are 2 male/2 female playing alternating positions.

e) **Gymnastics** is being held at Pinawa on March 11. Rob Smith (753-2615) is the host for the event. The fee is \$10 per person. Dave Cox is the Technical Advisor. All ages are welcome.

f) **Male (13 and under) Hockey** happens Feb. 24-26 at Fort Alexander. The registration fee is \$150 per team. Neil Guimond (367-2383) is the host, with Orville Acres handling the technical aspects of the competition.

g) **Ringette** takes place Feb. 17-19 in Mitchell. The fee is \$250 per team. Host Joyce Schroeder (326-4651). Technical person is D. Penner.

h) **Biathlon** occurs on

Feb. 19 in Wanipigow. The fee is \$5 per person. Ramona Mazur (985-4114) is handling the hosting and technical chairs. All ages are welcome.

i) **Cross Country Ski** takes place in Pinawa on March 4. Bruce Goodwin (753-2607) is the host and technical advisor. Fee is \$8 for 19 and under and \$10 for 20 and over.

Entries should be submitted to the host chairperson of the sport involved no later than a week prior to the event though some events may take entries right up to competition day. Feel free to call the Host Chairperson listed above, or the ESDA Office (268-2172) for further information, updates, or registration forms. Registration forms will also be available from the hosts, technical advisors, and your local recreation directors.

Join in the fun. Make Manitoba's longest running Regional Winter Games another success.

### Regional Wrap

Several Eastman athletes have been named to Team Manitoba to compete at the Canada Winter Games at Grande Prairie, Alberta in February. Bryn Goodwin of Pinawa will compete in Biathlon, Shannon Dikkema of Ste. Anne will compete in Cross Country Ski, and Dominique Carriere and Catharine Managire of Lorette will compete in Ringette.

As well, the teams of Connor Bates, Patrick Lestition, Jared Litke and Justin Richter (coach Roger Bates) and Megan Adams, Cheryl Groinus, Shawn Trush and Shaylene Bugyik (coach Bob Rondeau) of Beausejour and Tyndall Curling Clubs will compete in curling.

Lynn Morrissette of St. Pierre, Jamie Penner of Steinbach, Gaetane Managire of Lorette and Danielle Hobday of Oakbank are part of Team Manitoba vying for a spot in the 1996 World Ringette Championships in Sweden.

Chris Wielgosh of Beausejour, a player with the Winkler Flyers, was named to the Manitoba Junior Hockey League allstars.

Eastman biathletes who placed well at the Birch Ski Area invitational included Rorey Favel (1st, under 12),

Dean Williams (2nd, under 12), and Terry Moneyas (2nd, 14-15) of Wanipigow.

At an international figure skating competition in Minot, ND, the Springfield Shooting Stars Novice and Junior Precision skating teams both took gold medals.

Oakbank rhythmic gymnast Andrea Sellen has retired from competition gymnastics. Good luck with your future endeavours, Andrea.

Eastman welcomes Shari Gutoski as the new recreation director for the Springfield Rec. Commission, taking over from Cheryl Lindsey-Otto. Good luck in your new post, Shari; and thanks for all your past efforts, Cheryl. They were much appreciated.

### Help Wanted

The ESDA requires a representative from the southern area of Eastman to serve on the Summer Games committee for 1995 and 1996, with the possibility of working on the Mission Staff for the 1996 Manitoba Summer Games. This is a volunteer position. Interested parties should contact Executive Director Marion Mitchell at 1-204-257-0047.

### Opportunity Knocks

Here are a potpourri of opportunities (clinics, courses, competitions, etc.) coming up in the near future in and around Eastman:

NCCP Theory of Coaching Level I, March 13, 15, 20 and 22, Edward Schreyer School Beausejour. Contact Bruce at 268-2949.

Basketball Clinic, February 11, Pinawa Community Centre. Contact Michelle Chudd at 345-8816.

1995 Canadian Ringette Championships, April 10-15, Winnipeg. Contact Leon Morrissette (National Chairperson) at 433-7257.

Milk Super Seminar for Coaches, April 21-22, Winnipeg Convention Centre. Contact Tom Hulsman at Coaches Association of Manitoba (985-4029).

Recreational Badminton Clinics, February 4, 5, 19, College Louis Riel in Winnipeg. Contact Anil Kaul at 985-4159.

Juvenile Alpine Ski Series, February 25-26, Springhill

Winter Park Clinic Saturday and Race Sunday, for ages 11-14. Call Alpine Manitoba at 985-4049.

Canadian Winter Games Camp/Eastman Games Biathlon Event, February 18/19, Wanipigow.

South Biathlon Open, February 26, Falcon Lake.

Recreation Connections, Manitoba's Provincial Recreation Forum, March 2-3, Norwood Hotel, Winnipeg. Contact Culture, Heritage and Citizenship for further information.

Banda Manitoba Open Table Tennis Championships, February 11-12, University of Manitoba. Call Ron at 985-4176 for details.

### New award added to 1995 Sport Awards Brunch Line-up

The Manitoba Sports Federation is pleased to announce a new addition to its annual awards program - the David Eggertson Award for Community Service.

The award was established by The North West Company in memory of David Eggertson, son of the company's vice president who died in a recent car accident. It will be presented annually to one Manitoba youth athlete who has made significant contributions to his/her community.

The athlete chosen to receive the award and \$500 cheque from the North West Company will have made a commitment to the community in a volunteer capacity while also maintaining a strong academic standing and participating in organized sport programs.

Because of its community oriented nature, nominations for the David Eggertson Award will be accepted from sport organizations, clubs, leagues, community clubs, schools and the general public. The deadline for nomination forms to be submitted to the Manitoba Sports Federation is Monday, February 13. The award will be presented at the MSF's Sport Awards Brunch on Saturday, March 18.

For further information, contact Michelle Brick at 985-4216.

Well, I think that's enough information for today. See you back here soon. Stay warm.

# Sports

## Pine Falls Rink Schedule

Day	Time	Event	Day	Time	Event	Day	Time	Event
Mon	8:15	Figures Skating	Mon	8:15	Figures Skating	Mon	8:15	Figures Skating
Tue	1:30-3:30	SAFC	Tue	1:30-3:30	SAFC	Tue	1:30-3:30	SAFC
Wed	1:30-3:30	SAFC	Wed	1:30-3:30	SAFC	Wed	1:30-3:30	SAFC
Thu	1:30-3:30	SAFC	Thu	1:30-3:30	SAFC	Thu	1:30-3:30	SAFC
Fri	1:30-3:30	SAFC	Fri	1:30-3:30	SAFC	Fri	1:30-3:30	SAFC
Sat	1:30-3:30	SAFC	Sat	1:30-3:30	SAFC	Sat	1:30-3:30	SAFC
Sun	1:30-3:30	SAFC	Sun	1:30-3:30	SAFC	Sun	1:30-3:30	SAFC

## Powerview Rink Schedule

Day	Time	Event	Day	Time	Event	Day	Time	Event
Mon	8:15	Figures Skating	Mon	8:15	Figures Skating	Mon	8:15	Figures Skating
Tue	1:30-3:30	SAFC	Tue	1:30-3:30	SAFC	Tue	1:30-3:30	SAFC
Wed	1:30-3:30	SAFC	Wed	1:30-3:30	SAFC	Wed	1:30-3:30	SAFC
Thu	1:30-3:30	SAFC	Thu	1:30-3:30	SAFC	Thu	1:30-3:30	SAFC
Fri	1:30-3:30	SAFC	Fri	1:30-3:30	SAFC	Fri	1:30-3:30	SAFC
Sat	1:30-3:30	SAFC	Sat	1:30-3:30	SAFC	Sat	1:30-3:30	SAFC
Sun	1:30-3:30	SAFC	Sun	1:30-3:30	SAFC	Sun	1:30-3:30	SAFC

## NEMMHL Stats

### Novice Stats as of: Jan. 23

Team	GP	Wins	Losses	Ties	GF	GA	Points
Sagkeeng	13	12	0	1	122	45	25
Pineview	13	12	1	0	96	46	24
Hazelridge White	14	11	2	1	91	48	23
Lao du Bonnet #1	15	10	4	1	92	40	21
Pinawa #1	16	8	8	0	66	73	16
Hazelridge Green	13	5	8	0	63	61	10
Lao du Bonnet #2	15	3	11	1	54	83	7
Silver Bullets	11	3	8	0	55	84	6
Pinawa #2	13	2	11	0	31	98	4
Bullets	14	1	13	0	31	119	2

### Minor Atom Stats as of: Jan. 23

Team	GP	Wins	Losses	Ties	GF	GA	Points
Beausejour	9	6	2	1	34	28	13
Hazelridge	8	5	3	0	30	22	10
Pineview	8	2	5	1	38	43	5
Pinawa	7	2	5	0	24	33	4

### Major Atom Stats as of: Jan. 23

Team	GP	Wins	Losses	Ties	GF	GA	Points
Beausejour	8	5	2	1	41	29	11
Lac du Bonnet	9	5	4	0	49	36	10
Pineview	8	4	3	1	35	38	9
Pinawa	7	0	5	2	29	51	2

### Jr. B Standings as of January 22nd

Team	G	W	L	T	OTL*	GF	GA	P
Brandon	29	21	6	2		194	89	44
Gimli	27	19	8		4	176	104	42*
Peguis	28	18	10	1		174	137	37*
Selkirk	26	16	9	1	3	132	101	36*
St. Malo	25	16	9			192	144	32
Beausejour	26	13	12	1	1	136	143	28*
N. Wpg	26	9	16	1	4	120	151	23*
Souris	25	10	14	1	1	119	155	22*
Red River	24	9	14	1		108	130	19
Sagkeeng	26	6	19	1	2	101	176	15*
Sandy Bay	26	3	23			90	203	6

# HOME SALE EXTRA

Customer Service is Our First Priority  
**FORT ALEXANDER**

**Palliser Chesterfield and Loveseat**  
Our reg. \$1598.00  
**Home sale \$1199.00**  
Plus 2 Free coffee tables worth \$249 ea.

**Lodge look Chesterfield and Chair by Medalion - High Quality**  
Low price of \$897.00

**All Bedroom Suits On Sale**

5 Pce. Shaker Bedroom suite comes with 5 drawer chest Dresser, mirror, head and foot board  
**Super price of \$657.00**  
Our reg. \$1199.00

**Coffee Table Starting at \$49.97**

Solid wood bunkbeds or splits into two singles  
Sale \$397.00  
Our reg. \$629.00

2Pce. Sectional in multi color Fabric  
A real value at **\$599.00**

Our entire stock of occasional chairs on sale now  
**Save as much as 50%**

4 Pce. Light Pine finish comes with triple dresser 5 drawer chest and headboard  
**Sale \$599.99**  
Reg. \$829.99

Need to spruce up your walls? A large selection of framed prints  
**Starting at \$8.99**

Palliser Entertainment Unit  
Holds up to 29" T.V.  
Comes with glass and wood doors  
Lots of drawers for storage  
**Sale \$297.00** Our reg. \$499.00

**SAVE BIG ON RCA, HITACHI, GOLDSTAR, NIKO, SONY, PIONEER ELECTRONICS**

29" Goldstar T.V. surround sound stereo universal remote  
\$679.97 Our reg. \$849.98

Pioneer Hi Fi Stereo 6 disc multi play dual cassette tuner 80 watts of power  
Sale \$699.00 Our reg. \$799.00

Sega Genesis System comes with sonic the hedgehog  
Sale \$129.97 Our reg. \$149.97

**RCA 4 HD Hi Fi VCR \$399.00**

Mega Power stereo system To many features to list You've got to hear this system to believe it  
Sell for the low price of **\$127.00**

Super NES and Sega Games start at **\$39.97**

**CONGRATULATIONS**  
We would like to congratulate the winner of our grand opening draw.  
Mr. V. Keenan who won the 26" Goldstar T.V.  
Mr. Tim Bird who won the Goldstar VCR  
Gino Fontaine and Curtis Henderson who both won Sega Genesis Systems

## SOBERING FUNERAL CHAPEL

Our family serving your family

1 Watson Pl.  
Doug & Marlene Sobering  
Darrel Bakstad

Powerview, MB  
(204) 367-2300

## Beaches

### RCMP Community Advisory Group hold meetings in Vic Beach

By Lorraine Neal

The Victoria Beach R C M P Community Advisory Group of Victoria Beach held a meeting on Sunday, January 22nd, 2:00 P M at the Senior Scene. There were several topics discussed, such as exchange of information and neighborhood groups. The main event however, seemed to be the resurrection of the old issue of full time year round policing for Ward One.

After two hours of wrangling over the issue, it was decided to adjourn the meeting. With everyone in agreement, a second meeting was scheduled for Wednesday, January 25th. Each member was asked to prepare a proposal for discussion, with a view to making a future presentation to the Reeve and Council of the L G D of Alexander.

Other members, concerned that one constable alone would be almost useless, expressed a very large concern that the cost of year round policing would escalate out of sight. It was agreed that the establishment of a municipal police force would be too costly for most taxpayers.

Some members of the group expressed a desire to work a little harder at such self help groups as Neighborhood Watch, Rural Crime Watch, and the possibility of establishing a Citizens on Patrol Program.

Staff Sergeant Gordon Leibrecht, who attended the meeting with Constable Anne Calderwood of the Powerview R C M P detachment, gave the group some insight into what the R C M P is currently facing, and will continue to face in the future. Leibrecht stated that Government spending cuts have affected the force considerably. The general population will have to stop asking for grants and hand-outs from all levels of government, and take responsibility for their own neighborhoods. Get involved in the

Neighborhood Watch program, and if enough interest is shown by residents, form the Citizens on Patrol group. Citizens on Patrol has proven to be very effective in areas of the province where it has been implemented.

Liebrecht stated the 1994 statistics he has for the Municipality of Victoria Beach, who have their own year round police, show that there was an increase in the break and enters. In the remainder of the beaches areas, there was no increase in the break and enters.

A vote was called, and the results were: seven against year round policing, and two in favor. It was decided that a letter to the LGD would be drafted requesting the summer constable have peace officer status.

The next meeting is scheduled for March.

many, many activities scheduled during the week. Some of these activities are quilt making, perogie making and so on. Of course the perogies made by these good ladies are subsequently sold. If you'd like further information about any of these activities please call the Activity Director...Betty Gilbert at 754-2510. Crafts and Whist are also weekly events...call Merle Anderson at 754-2425.

In the Grand Marais Rec Hall, Bingo is held every Tuesday with the doors open at 6:30 P M. Nevadas are also available.

Now for the fun you've been looking for...something to break up the lo-oo-ng winter...How about trying your hand at Black Jack or Roulette? Casino Fun Night, a fund raiser, will be held at the Four Jakes Saloon on Saturday February 11th. This will be a regular Casino group which will be coming from Winnipeg. Tickets are being sold for \$10.00 and will include a roast beef dinner with all the trimmings. The fun will begin at 6:00 PM, and include a silent auction. Be sure to take this one in!!

Grand Marais scene... The Grand Marais Senior Citizens Club would like the public to know there are

## Beaches

### Buzzes

Grand Marais scene... The Grand Marais Senior Citizens Club would like the public to know there are

## Sports

### Thrills Chills and Spills

#### First Annual Ice Man A T V and Motorcycle Racing at Hillside Marina

by Lorraine Neal

A chill wind from the north blustered across Lake Winnipeg causing spectators to button up at the first of what organizer Thomas Stucky hopes will become an annual event. The action was the Ice Man A T V and Motorcycle Racing at Hillside Marina on Saturday afternoon, January 28th, 1995.

There was plenty of action as racing dirt bikes skidded around the oval track which had been cleared on the lake surface. It looked like a lot of fun. The organizers and contestants race every second weekend at Quarry Oaks.

There are eleven classes including a category for the female riders. There were no female riders registered in the Hillside races however. In general dirt bikes are used,

but there are some larger bikes which have been specially fitted for ice racing.

The warm up races began at twelve noon, after registration at the Birchwood at 10:00 A M. The actual races began at 2:00 P M. At the conclusion of racing, winners were presented with plaques and trophies at the Birchwood Motor Hotel.

Special thanks to the twenty three local business who supported the event, and to the organizers. First place winners in each category are:

Harley Riders -	first place -	Pat Simon
Beginner bike -	first place -	Rod Orchard
Junior bike -	first place -	Ron Fritz
Senior bike -	first place -	Greg Fritz
Expert bike -	first place -	Kim Hood
Junior Vintage -	first place -	Neil Brooker
Expert Vintage -	first place -	Kim Hood
Expert 4 wheeler -	first place -	Paul Mazurik

Overall Ice Man of the Day winning the prize from the Birchwood was Don Rempel. In all it was great fun to watch. It would be easy to recommend it as family entertainment, make sure you're warmly dressed. Take in this great action next weekend at Quarry Oaks.

**PINE FALLS UNISEX SALON**  
Barber Shop will be closed for two weeks  
Feb. 10 - 27  
Will re-open as usual Tues. Feb. 28  
Thank-You, Al DeGagne

**10th Annual Brokenhead River Agricultural Conference**  
February 8 & 9  
Brokenhead River Recreational Complex  
James Ave. East, Beausejour

**Wednesday Feb. 8** Registration 12: Noon (\$2.00)  
**Thursday Feb. 9** Registration 12: Noon (\$2.00)

**Features:**

- \*BST - A Consumer's Perspective
- \*Eastern Grasslands Society
- \*1144 Livestock Co-Op
- \*Understanding Canadian Wheat Board Delivery System
- \*Farm Business Challenges Conference

**Features:**

- \*Fusarium Head Blight
- \*Hearing Disorders
- \*1144 Livestock Co-Op
- \*Getting Through Tough Times
- \*Dugald Costume Museum Fashion Show
- \*Overview of Farming over the past 125 years

Agassiz Soil & Crop Improvement Association  
**Annual Meeting**  
February 8, 7-9 PM  
Keynote Speaker: Owen McAuley  
Marketing Grain Without the Crow Subsidy  
Trade Show - Door Prizes

**SPONSORS**  
Brokenhead Agricultural Society, Agassiz & Springfield-Tache Weed Districts, Agassiz Soil & Crop Improvement Association, Manitoba Agriculture

**CELEBRATIONS UNLIMITED**  
**OPENING SOON!!**  
Friday - Feb. 10th  
*The Gift Shop With A Difference*

Balloons Balloon Decorating  
Specialty Candy Engraving  
Giftware Gold Jewellery  
Trophies

Located Within Pineview Shell  
(Old Laundromat)  
Hwy. 11 and Art St.  
Powerview

NOW IS RSP TIME...  
**EARLY BIRD RSPs**  
**DO IT EARLY AND RETIRE RICHER**

The earlier you make your RSP contributions, the sooner you start earning tax-deferred income. And the richer you'll be at the end of the road.

A certified RSP Specialist at Royal Bank is ready and waiting to help you build the retirement savings plan that's right for you.

Want to retire richer? Don't wait until the March 1, 1995 deadline. Call or visit an RSP specialist at a Royal Bank branch and make your 1994 RSP contribution right away.

More Canadians Choose Royal Bank for RSPs.

**ROYAL BANK**

**Understanding RSP contribution limits**

Ken Dick

If you're like a lot of people, you based your RSP contribution for the 1994 tax year on the information you were given by Revenue Canada on the notice of assessment you received after filing your 1993 tax return.

You may not want to wait until you receive your notice of assessment before deciding how much you want to contribute. You can get a head start by calculating your personal limit yourself!

By doing your calculations early in the year, you can avoid the rush to make last-minute contributions. You can arrange automatic monthly, quarterly or semi-annual contributions during the taxation year to help maximize your RSP earnings. You decide how much you want to invest, when you want to make your contributions and the investment options you prefer.

Let's take the 1994 tax year as an example. The RSP contribution limit is \$13,500 or 18% of your 1993 earned income, whichever is less. You can use your "Total Employment Income" from your 1993 tax return as the basis for this calculation.

If you receive income from various other sources, including alimony or separation allowances, self-employment, royalties, net rental income, and Canada/Quebec Pension Plan disability benefits, add these to your Total Employment Income to calculate your 1994 limit.

**The Pension Adjustment**  
If you're a member of a company pension plan (RPP) or a Deferred Profit Sharing Plan (DPSPP), you have to take your "pension adjustment" (PA) into account. The pension adjustment represents the value of benefits which have accrued during the year in a company-sponsored pension plan or the amount the employer contributed to a DPSPP.

Also, if your employer retroactively upgraded the value of your defined benefit RPP, your RSP contribution limit for the year could be reduced by a "Past Service Pension Adjustment" (PSPA). Both the PA and the PSPA amounts are reported on your T4 slip and they are used by Revenue Canada to calculate your RSP contribution limit.

**Carry unused RSP contributions forward**  
Another important feature of today's RSP legislation allows you to carry forward for use in future years any unused portion of your annual contribution limits since 1991. This is a significant benefit for people who simply cannot make their maximum allowable contribution every year.

The carry forward shouldn't be a substitute for disciplined savings and it's best to contribute every year if you're able. Missing even a single year of RSP contributions can be very expensive. One skipped contribution of \$5,000 could reduce the value of your RSP by more than \$34,000 at the end of 25 years, assuming an average annual return of 8%.

To work out your 1994 limit, use the following formula:

1. Enter your earned income for 1993 \_\_\_\_\_
2. Multiply by 18% \_\_\_\_\_ x 0.18
3. Result = \_\_\_\_\_
4. Enter the lesser of line 3 or \$13,500 \_\_\_\_\_
5. Subtract your Pension Adjustment (PA) as shown on your 1993 T4 slip \_\_\_\_\_
6. Subtract your "Past Service Pension Adjustment" (PSPA) as shown on your 1993 T4 slip \_\_\_\_\_
7. Add the unused portion of your 1991, 1992 & 1993 RSP contribution limit \_\_\_\_\_
8. Your RSP deduction limit for 1994 \_\_\_\_\_

Ken Dick, Branch Manager  
Pine Falls 367-2213

This article is one in a series prepared by Royal Bank

**Loss Weight Tea Great!**  
With the Supplemental Diet Plan  
TENNESSEN 000

**Pine Pharmacy**

For more information call  
**1-800-361-4720**

Small text: "When it says 'Supplemental Diet Plan' it can't be used as a substitute for a meal..."



**RUSSELL FUNERAL HOMES LTD.**

trusting, caring service since 1941

437 Park Ave. Beausejour 268-2263


Harvey J. Geisbrecht Director

CANADIAN INDEPENDENT




Regardez-ça de près... Take a Close Look...  
Il y a du nouveau! Again

**VOUS POURRIEZ GAGNER** **YOU COULD WIN**



**EN INTERET SUR VOTRE COTISATION A VOTRE REER** **IN INTEREST ON A CONTRIBUTION TO YOUR RRSP**

**CONCOURS REER**  
Entre le 2 janvier et le 1er mars 1995, date à laquelle prendra fin le concours, une cotisation de 500 \$ à un REER d'une casse populaire participante vous rendra éligible au tirage d'un Grand Prix de 100 000 \$ et d'un autre tirage jusqu'à concurrence de 10 000 \$.

**RRSP CONTEST**  
Between January 2nd and March 1st, 1995, the Contest closing date, a minimum contribution of \$500 to a Canada Popular RRSP will make you eligible for the Grand Prize draw to win 100,000 dollars for one year up to a maximum of \$10,000.

Les caisses populaires du Manitoba

**Misc. For Sale**

For sale - Shubert piano, good condition asking \$950; Trumpet, used one year - asking \$250; tenor sax - asking \$300; Renegade electric guitar, almost new (amp, pedals, etc incl.) asking \$350; Window air cond. - asking \$140 - 268-1102 after 5pm.

**For Sale**

-1982 Camaro T-top \$1100  
-1969 Buick Riviera Conv - restorable - \$1000  
-1979 CB 400 motorbike - \$800  
-Apt. size dryer Maytag - \$40  
-Large Hamster cage, wheel, water bottle, - new \$100 sell \$50  
-2 - 13" tires and rims 185x75 - \$40  
-Brand new truck seat cover - grey - \$15  
-Full size dryer - \$75  
Phone 268-3182 BJ

**FOR SALE**

Moving Must Sell!!  
Fridge, clean white, great baking/beer fridge. \$95.00 OBO  
Couch and love seat - blue with cream and brown flowers \$150 OBO  
Gas dryer - 3 yrs old exc. cond. \$175 OBO  
Stove - HotPoint - beige w/black front - self cleaning needs door handle - Works Great!! \$125 obo. call 268-2408 from 10-5 or 268-4446 after 5

**FOR SALE**

Apartment size washer/dryer combo. Good cond. \$150.00 268-1853 anytime.  
For all your Custom Window Covering from vertical to mini blinds and drapes to toppers call C.S.E. - 268-4373

**For Sale**

1978 FLEETWOOD House Trailer. Used seasonally. Like new 3 bdrm. 1 large bath Asphalt Shingle Roof. To be moved. Asking 22,000. Must be seen. Contact Bjour 268-2814 or Wpg 946-9820 9-5

**For sale**

30x50 Steel Metal Shop to be moved. Offers. Contact Bjour 268-2814 or Wpg 946-9820 9-5

**For Sale**

Honda Generator EMS. 4000 w. Like new. Rarely used. Lge Gas tank. Electric start. On wheels \$2000.00 No PST/GST! Call 268-2455 after 5 p.m.

**VOICE CLASSIFIEDS**

All Classified advertising must be paid in cash prior to publication.  
Be sure to Check your advertisement for errors when it first runs. The Voice cannot assume responsibility for errors in subsequent issues if the mistake has not been made known to us.

**Rates**  
15 cents per word  
minimum charge \$4.00

**Deadline**  
for all Advertising  
4:00 pm Friday

Phone - 367-4466  
Fax - 367-4078

**OFFICE HOURS**  
Monday - Friday  
9:00am - 4:00pm,

**The COMMUNITY VOICE CLASSIFIED SECTION**

**Wanted**

**Wanted**  
New or used 330 Conabear Traps. Must be reasonably priced.  
Steve. 756-2275

**Real Estate**

**HOUSE FOR SALE - BEAUSEJOUR**  
6 yrs old, 1202 sq ft., 3 level split central vac, water softener, attached concrete deck, double attached garage. Close to Edward Schreyer School on quiet bay. Call 268-2124

**Help Wanted**

A part-time residential care worker to assist and support individuals with developmental disabilities within their home and community. Must be able to do shift work and weekday and weekend overnights. Experience an asset for more information call Cheryl at 268-1409 after 3 pm. Send resume to Beausejour Homes Inc. Box 1252, Beausejour MB. R0E 0C0

**Agriculture**

**Weanlings**  
for Sale call:  
265 - 3203

For Sale: Heavy Feed Oats - some suitable for seed. Also Feed Barley. ph. 268 - 3411

**Wanted**

**WANTED**  
Musicians for rock band. Must be prepared to work. phone Greg 265 - 3203

**WANTED** fellow to skid out  
Approximately 40 - 50 cords  
Tamarac ph. 268 - 2041

**Advertise in the Community Voice Classified Section the biggest bang for your buck!!**

**For Rent**

1 Bedroom Ste. All appliances, Park Ave. Beausejour 268-1955

**Lawyers**

**WILLS** - Let me draw your will, any kind, any length for only \$80.25 full and complete price. This offer is made so we can get acquainted. I'd like to be your family lawyer. Please call me at 345-8145 (Lac du Bonnet). Warren D. Besel, Lawyer. TFN

**Snowmobiles**

**Snowmobile for sale**  
1988 Arctic Cat El Tigre 440. Minty 268-4065

1970 Arctic Cat Panther 440cc Classic Flip-Top Leopard seat G.C. \$525<sup>00</sup>  
Beausejour - 268-2700

1972 Arctic Cat Panther Newer Kawasaki 440cc storage seat G.C. \$550<sup>00</sup>  
Beausejour - 268-2700

**Automobiles**

**For Sale**  
1987 GMC van for sale  
268-1670

89 Grand Marquis L.S. loaded, only 75,000 km. Excellent cond. asking \$11,995 OBO Dave 268-3945 or 339-9251. 1-800-363-6372

93 Ford F-150 XLT Regular Cab. only 48,000 km. Excellent cond. asking \$16,995 OBO. Dave 268-3945 or 339-9251. 1-800-363-6372

**Memoriams**

**Lazaruk** - In loving memory of our dear husband, father and grandpa Stan. Who passed away from us Feb 2, 1991 at Pine Falls Hospital. Time passed so fast we can't believe you are not with us. We often would like to ask you or tell you something. But you're not in the house any longer with us to see our sorrow. You are in our hearts forever walking around the yard. But those days are missed forever. May you rest in peace. Lovingly remembered and sadly missed by all, Wife Helen, children Juliana, Gene, Susan grandchildren Lynn and Joanne.

**Buss**  
In loving memory of our father, grandfather and great-grandfather - Henry D. February 1, 1994.  
Deep in our hearts you are fondly remembered.  
Sweet, happy memories cling round your name;  
True hearts that loved you with deepest affection  
Always will love you in death the same.  
Lovingly remembered by your family.

**The COMMUNITY VOICE BUSINESS DIRECTORY**

**Lloyd Emberly**  
**Esso Sales Agent**  
**Lac du Bonnet**  
Bus. 345-2285  
Res. 345-6239

**Stewart's Memorials**  
Monuments & Markers  
Gravies & Bronze  
Grave Covers - Inscriptions

Visit our showroom  
317 North, Lac du Bonnet  
PHONE ANYTIME  
345-2644



**Pine Pharmacy**  
Pine Falls  
**Try Your Drugstore First!**  
Open Monday - Saturday  
9:30am - 5:30 pm  
**367-2611**  
Dispensary 367-2517

**WESTERN BEARING (Selkirk) INC.**  
Bearings - Materials  
Handling Equipment  
Agricultural - Industrial Fasteners

44 Mercy St.  
Selkirk, Manitoba R1A 1Z7  
PIL 785-8954  
H'PG 452-1456  
FAX (204) 785-9003

**Mr. Perogie**  
Homemade Perogies with the Clean "Fogies" The Community Choice

Perogies available at:  
-Lazaruk's Riverview Self Serve  
-P.F. & Ft. Alex Northern Stores  
-Pedden's Place  
-Chapel's  
-Country Mile Mercantile (Belair)

**Fran's Accounting**  
28 McDougall Ave. St. Georges  
**ACCOUNTING SERVICE**  
Bookkeeping, sales records, payroll, audits, financial statements.

**INCOME TAX RETURNS**  
Farm, personal, business, and corporate returns professionally prepared.

Box 90, St. Georges  
**367-8756**

**ARCHWAY MORTGAGE SERVICES LTD.**

• Residential, Commercial Purchase  
• Credit Consolidation  
• Charge-Offs by Resolving  
• Bad Credit/Good Credit • Previously Bankrupt  
• No Down Payment

**BEST RATES AVAILABLE**  
992-5626 (Wpg.)  
Local Rep - Pine Falls  
Linda Dupont - 367-8597

**PINE FALLS SALES & SAVING SHOP**

PINE FALLS, MB.  
BOX 54, GREAT FALLS, MB.  
R0E 1V0

**AFFORDABLE TERM UNIFORMS AND EQUIPMENT ALSO AVAILABLE**

Business hrs. Mon. - Sat.  
9:30 a.m. - 6:00 p.m.  
Thurs. till 9:00 p.m.  
**Ph 367-9150**

Located between barber shop & Video 1001

**Dr. Clinton Esser**  
**Family Chiropractic Health Care**

Hours:  
Mon. 9am-1pm 3pm-7pm  
Tues. 9am-1pm 2:30pm-5pm  
Wed. 9am-1pm 3pm-7pm  
Thurs. 9am-1pm 2:30pm-5pm  
Fri. 9am-1pm 2:30pm-6pm  
Corner of Church and PTH 11  
In Powerview

**367-4858**

**POWerview AGENCIES**  
Insurance Brokers

Autopac/Property/Farm  
Sickness and Accident  
Pension Plans  
Motor Vehicle Branch  
George and Vince Harbottle  
Bus. 367-8350  
**MANITOBA BLUE CROSS**

TV-VCR-Audio-Microwave  
Sales-Service Repairs to all makes  
**Zenith Panasonic Dealer**  
Weekly Trips to Pine Falls Area  
All Service Guaranteed

**Whiteshell Electronics**  
26 Byng, Pinawa  
**753-2223**

**Lazaruk's Riverview**  
**Self-Serve**  
**Hours**  
Monday to Friday  
9:00 - 5:30  
Saturday  
9:00 - 5:00  
**367-2473**

Chinese, Szechuan & Canadian Cuisine  
**Powerview Restaurant**

**"Hot \* Spicy \* New \*"**  
Hot sour soup, Almond kung pao kuy dim, Szechuan mix-veg. beef, Szechuan sauce breaded veal, Almond kung pao shrimp.

Catering to small or large parties. Book your Christmas or private parties. Gift certificates available.

**Business Hours**  
Mon. - Thur. 11 a.m. - 10 p.m.  
Fri. & Sat. 11 a.m. - 11 p.m.  
Sunday 12 p.m. - 9 p.m.

**ph. 367-2117**

**EINFELD'S BAKERY**  
Powerview & Victoria Beach  
**A Continuing Tradition of Fine Quality Baked Goods**

**STORE HOURS:**  
Tuesday - Friday  
8:00 a.m. - 6:00 p.m.  
Saturday  
8:00 a.m. - 5:30 p.m.

Don't be disappointed - order ahead  
**367-8019**

**POWerview AUTO SUPPLIES**  
367-2014

Box 241, Powerview, Man.

AUTOMOTIVE AGRICULTURAL INDUSTRIAL AND WELDING SUPPLIES



**DARRELL J. TARRANT**  
**CHARTERED ACCOUNTANT**  
1 WATSON PLACE • POWerview, MANITOBA

BOX 369 POWerview, MANITOBA R0E 1P0

BUS: (204) 367-9193  
RES: (204) 367-4100  
FAX: (204) 367-2845

**"THE JENNY WREN" Restaurant**  
HILLSIDE BEACH ROAD & HWY 96 NORTH  
HILLSIDE BEACH, MANITOBA R0E 1A0

We are closed for the winter season, and will re-open in May 1995. BUT, our restaurant is available throughout the winter for your private function or party - Birthday, Christmas, Retirement, Christmas, Anniversary, Shower, etc. Any menu arranged to suit your function and budget for up to 30 people.  
Call Jenny at 756-3762 for details

**Great Falls Foods**  
Highway 11, Great Falls  
**367-2976**

**-OPEN 7 DAYS A WEEK-**

See us for your custom cutting and smoking needs, both domestic and wild meat, or supplies for home use.  
Having a Social Function???  
Call us to look after everything for you  
Ask us about delivery  
**"The House of Quality"**

**DR. ARNOLD ANDERSON**  
**Optometrist**

Contact Lenses and Eyeglass Fittings

**MANITOU LODGE PINE FALLS**  
**367-2390**  
Monday to Friday  
9:00 a.m. to 12:00 noon & 1:00 p.m. to 5:00 p.m.  
Examinations done on Tuesdays

LAC DU BONNET DISTRICT HEALTH CENTRE  
**345-8647**

Tuesday  
5:00pm - 8:00pm

**Ken's Eavestroughing**  
Continuous Eavestroughing - 12 Pre-painted Colours - Free Estimates

Phone  
**756-2709**

Ken Dewick  
Box 41, Traverse Bay, Mb.  
R0E 2A0

**Leo Boulanger Custom Hauling**  
Hwy 313 at 433, Lac du Bonnet

BY THE TRUCKLOAD OR BY THE YARD

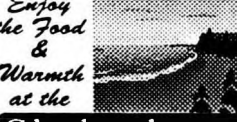
- screened top soil
- garden dressing
- peat moss
- clay fill
- driveways
- sand
- gravel
- limestone
- decorative stone
- masonry sand

Phone anytime  
**345-8726 or 345-2039**

**THE HAIR SHOPPE**  
FAMILY HAIR CARE  
Tuesday to Saturday

Phone 756-HAIR  
1-800-263-3772

Enjoy the Food & Warmth at the  
**Chokecherry Inn**  
Traverse Bay, MB  
756-3041



**Ken's Eavestroughing**  
Continuous Eavestroughing - 12 Pre-painted Colours - Free Estimates

Phone  
**756-2709**

Ken Dewick  
Box 41, Traverse Bay, Mb.  
R0E 2A0



*Let the  
Community  
Voice  
Help you wish  
your sweetheart a*

*Happy Valentines Day*

*What better way to  
tell that special  
someone how much  
you love them than  
by surprising them  
with your own  
special message in  
print!*

*for more details call  
Gloria at*

**367-4466**

